



*Shown with optional full body paint.



HITCHHIKER 5TH WHEELS
WWW.NUWA.COM

DISCOVER AMERICA

DISCOVER YOUR FAVORITE WAY TO ESCAPE

The experienced “extended stay” RVer and the newly retired have a dilemma today; how to continue their plans for extended RV travel. More people are discovering the simple pleasures of temporarily or permanently abandoning the “stick house” and moving in their 5th wheel from one desired location to another in this beautiful country of ours. The dilemma is how to balance the need for residential livability and quality in the 5th wheel with the realities of towing and fuel costs. We at NuWa promote the fact that “extended stay” RVing is both “green” and a more economical approach to retirement because less energy is used than if one maintained the “big home”. The typical full-timer doesn’t “pound the highways” day in and day out; he sits in one “base camp” for a period of time until he is ready to move on to his next destination, so excess use of fuel is not nearly as much a reality as it is an emotional issue. Large luxury “full time” rigs such as our Champagne will continue to be popular with those who are willing to tow with one ton or MDT vehicle. Our research shows that most people want to limit their trailer to a weight that can be towed by the one ton trucks. But they also want to optimize spaciousness and livability. They know that it doesn’t take much more fuel to tow the upper limits of that truck’s capacity than it does the lower limits.

For 2012, NuWa has positioned its Discover America product to meet this need for a large, truly “high end” 5th wheel that can be towed by one ton vehicles. The Discover America combines much of the quality and features of the Champagne at a weight that runs about 1,250 pounds less. The Discover America models are not “wide body” like the Champagne, but the multiple glides increase square footage without greatly increasing length or weight. Thus there are many choices of length and design available from the most experienced and one of the most respected 5th wheel manufacturers.

The weights of the Discover America are not light, but they are accurate and include many items that would be optional on other brands. Because of this, the Discover America is not inexpensive. However, more and more customers comment on the popular NuWa owner’s forum that they would gladly make the slightly greater investment again. Considering the fact that a used HitchHiker typically brings at least \$10,000 more than the mass produced brands, you get much more of your investment back when it is time to sell or trade.

If you are looking for a reliable “extended stay” 5th wheel to meet your quality, livability and performance expectations but you want to stay in the 15,000-16,500 lb. GVWR range, then take a good look at the Discover America. Unique floor plans, exceptional livability, proven reliability, and service support are just some of the reasons why Discover America owners say they would definitely make the same purchase all over again.



Slide Out Pantry



Bedroom shown with Queen Size Bed



355 Kitchen



Standard with vessel sink.
Integrated vanity sink optional.

RADIANT TECHNOLOGY

NuWa announces the addition of Radiant Technology “reflective” insulation in roofs, floors (also glide rooms), under end caps and under the bedroom floor of the DA and CE products. This “space age” material was first used to protect astronauts in space, where temperatures facing the Sun can be 450° F and the shaded side can be -250° F at the same time.

This reflective insulation will noticeably help keep your HitchHiker comfortable in any climate. The added insulation will take some load off the air conditioner and should extend the compressor life. It is hoped this standard feature will reduce the need for two air conditioners for some of our customers as well. In winter, not only should less propane energy be required to heat your trailer, but when combined with the quieter “two speed” furnace, the lower speed fan should run more which means less noise.

Radiant Technology insulation reflects summer heat away from and winter heat back into the trailer at a stated rate of 97% efficiency. Conventional insulation, on the other hand, fills up with heat and when full, transfers it into the unit. Combining these two methods creates a superior design. And when combined with NuWa’s famous “blue Dow” foam sidewall material with 25% more insulation value, we feel there may be no better insulated 5th wheel at any price point. The double layer of radiant barrier in the floor eliminates the need for residential spun fiberglass insulation, which can hold moisture from condensation or a plumbing leak.

Main Floor Layers

1. Carpet
2. Padding
3. Floor Decking ¾"
4. Radiant Barrier
5. Darco Moisture Barrier
6. 10" Airspace w/heat ducts and insulated frame rails
7. Radiant barrier glued to Lamiplast underbelly

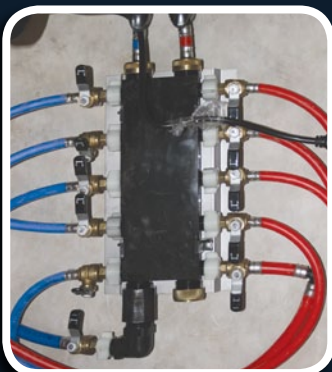
Upper Floor

1. Carpet
2. Padding
3. Radiant Barrier
4. ¾" Floor Decking
5. ¾" Dow Blue
6. ¼" Luan

Lockable Paddle Handle Latch



The wider, deeper steps are lower to the ground than many brands and they are easier and safer to use.



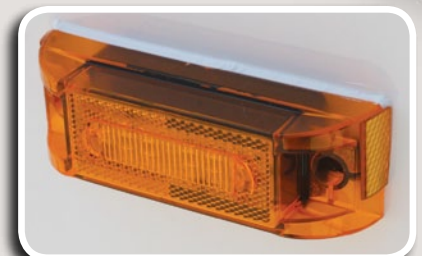
Water Manifold System improves flow and provides individual shut off for easy service or maintenance.



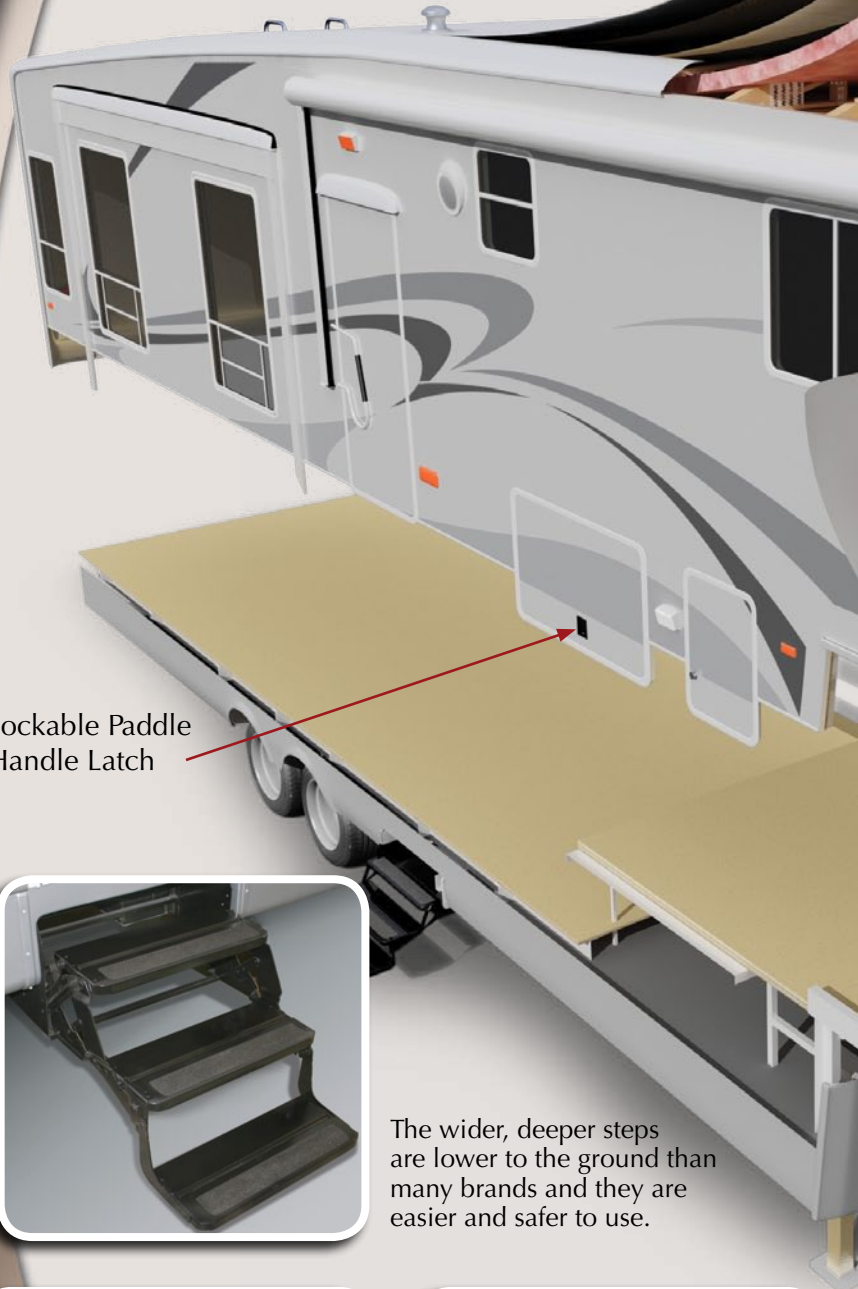
New smaller style “scare” lights enhance safety and convenience.



Brighter, longer lasting and safer tail lights are standard.



Sidemarker/Turn Signal lights are also LED, adding to the safety factor.





One Piece Rubber Roof

5/16" Roof Decking

Radiant Barrier

4 1/2" of Fiberglass Insulation

5" Wood Roof Truss Rafter

Gel Coat Fiberglass

Luan Board

Aluminum Substructure

1 1/2" Blue Dow Insulation

Interior Luan

Interior Vinyl

Ceiling Construction

R-Factor: R-14

1. 5/32" Decorative Ceiling Panel
2. Light and Strong Truss Rafters
3. 4 1/2" Fiberglass Insulation Between Rafters
4. Radiant Barrier
5. 5/16" Structure Wood Fastened to Rafters
6. Rubber Roof Laminated to Roof Deck

Panel-Core Super Structure Sidewall

R-Factor: R-9

Layer 1: Hi-Gloss Automotive Fiberglass with 1/4" Luan Backer. All butt seams in Luan are fiberglass which make a superior sidewall.

Layer 2: Hi-Density Blue Polystyrene Foam by Dow® Chemical, Bonded Between Welded Aluminum Sidewall Substructure (25% higher R-Value than White Bead Foam, 40% greater resistance to moisture and the only insulation material that has a 15-year R-Factor guarantee.)

Floor Construction

R-Factor: R-19

1. Powder coated 10" insulated I-beam frame
2. Lamiplast enclosed underbelly with waterproof radiant barrier insulation
3. 10" Airspace w/heat ducts and insulated frame rails
4. Radiant Barrier Insulation
5. 3/4" Sturdi-Wood Flooring (1 Piece)
6. 8 lb. Density, 7/16" Carpet Pad
7. Color Coordinated Designer Carpet



Photo showing 10" I-beam frame rails, fully covered by radiant barrier insulation. NuWa's frames are manufactured locally and are famous for their strength and powder coat finish.

STANDARD FEATURES

GLIDE ROOM FEATURES

Hydraulic Rack and Pinion glides w/manual override
 Bed and closet glides are electric motor design
 Glides have insulated floors and laminated walls & ceilings
 Individual control switch for each glide
 Overhead cabinets above sofa or chairs
 Two Halogen lights with dimmer switch

BEDROOM FEATURES

Soft top 60" x 80" queen bed with storage underneath
 Shelves and overhead cabinets near bed
 Residential style dresser w/full extension drawer glides
 Wired for second A/C in bedroom
 "Blackout" day/night shades

BATHROOM FEATURES

Spacious fiberglass seamless shower with glass door
 Neo angled shower with seat also available
 Power vent/dome with wall switch
 Thetford porcelain toilet with water spray attachment
 Solid surface counter top with vessel vanity sink
 Integrated sink available as an option
 High-intensity lights over vanity
 Towel bar(s) and hand towel ring
 Adjustable heat duct in bath area
 Designer linoleum in toilet and lavatory area
 TV lead in bedroom

KITCHEN & APPLIANCES

15,000 BTU Ducted Air Conditioner with
 Digital Thermostat and Adjustable Registers
 10 Gal. DSI/LP/110v Rapid Recovery Water Heater
 Water heater bypass system
 Domestic OTR microwave with built in vent
 8 Cu. Ft. Norcold refrigerator w/raised panel doors
 Three-burner stove with stove cover and oven (recessed)
 Two stage whisper quiet furnace
 60 amp converter/battery charger
 50 amp service w/detachable power cord
 Fire extinguisher, LP, smoke, and CO detectors
 Most models wired for washer/dryer
 Square raised panel doors
 Residential solid surface counter top with backsplash
 Large, deep, integrated sinks
 Single lever faucet with pull-out spray
 Multiple drawers, including pot & pan drawer
 Silverware tray
 Full extension ball bearing drawer glides
 Pantry with shelves and/or drawers
 Coat closet at most entrance doors
 Designer linoleum in kitchen and entry
 Fluorescent lighting over kitchen counter
 Rope lighting above cabinets (some models)
 Residential concealed cabinet door hinges
 Space for large wastebasket in most models
 Toe kick on kitchen cabinets with accent lighting

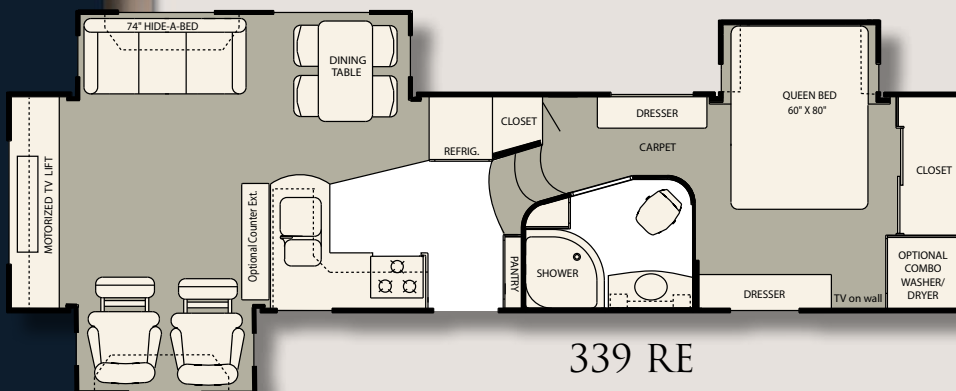
The optional slide-out baggage tray is easy to pack and organize for quick access.



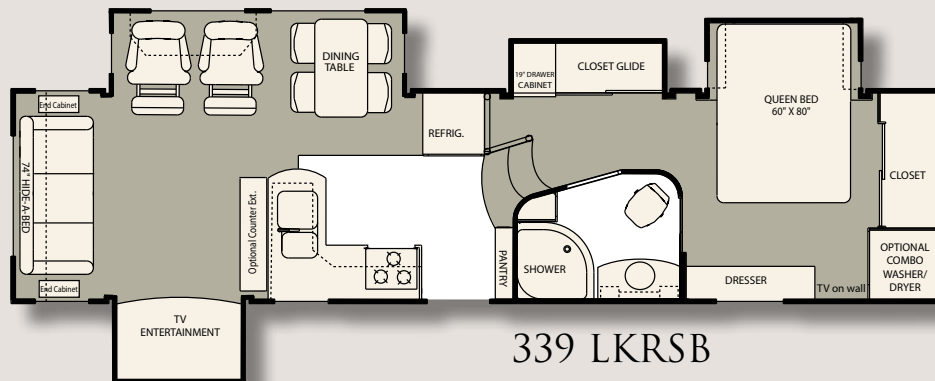
Four compartment battery storage.



Exterior water center access.



339 RE



339 LKRSB

LIVING ROOM, ENTERTAINMENT & DESK AREA

Single disc DVD/CD player w/surround sound
 DVD/CD storage and space for satellite receiver
 Winegard TV antenna with signal amplifier
 Wired and prepped for satellite dish (tripod & roof)
 32" LCD HD-capable flat screen TV
 TV/VCR distribution for multi-program viewing
 Hide-a-bed sofa with innerspring mattress
 60", 66" (36" bed) or 74" (Double) or 82" (Queen) HAB
 Two comfy glider rocker recliners
 Day/night shades
 Residential carpet and pad
 Hidden leaf dining table with four chairs
 Fantastic Vent with wall mounted control
 Ceiling fan with light in living or kitchen area
 Exceptional lighting for reading
 Dimmer switch to the new halogen lights
 Cable and satellite connections at desk

FRAME & SUSPENSION FEATURES

Young's Frame built locally to our standards
 10" I-beam frames are powder coat painted
 Steel braces support water tank
 Heavy duty outriggers to which floors are bolted
 7000 lb. axles with Nev-R-Lube bearings
 Heavy-duty greasable spring shackles
 Heavy-duty shock absorbers
 Trail Air Equa Flex rubber suspension
 Demco Glide Ride hitch pin box (regular or extended)
 "E", "G", or "H" range tire with 8-hole wheel
 (spare tire and carrier)
 Electric rear stabilizer jacks
 Dual motor front jacks with snap locks
 Wider and deeper entrance step lower to ground
 Cross arm stabilizers on front jacks

EXTERIOR FEATURES

30 lb. LP bottles with auto changeover regulator
 Space for four batteries (two standard)
 Battery cutoff switch for storage protection
 Folding entry assist handle
 Deluxe 8500 Series A&E awning
 1" insulated baggage doors with paddle type handles
 Pneumatic hinges hold baggage doors in "up" position
 Pre-wired for solar panel battery maintenance
 Hi-gloss automotive fiberglass laminated sidewalls
 Heated subfloor and holding tanks
 Black holding tank flush kit
 Hitch and baggage area lights
 High-intensity scare light on each side
 Super insulated Vacu-Bonded walls (see video on website)
 Welded aluminum substructure for ends, sidewalls, glides
 5" wood truss rafters to maximize insulation and strength
 Wood decked "walk anywhere" rubber roof w/vented attic
 Black Frame Tinted safety glass windows
 No window in entrance door reduces heat & maintenance
 Window in door available on build unit
 Water manifold system for individual control of fixtures
 Large capacity pass through storage with lockable doors
 Separate storage area for two folding lawn chairs
 Separate vented storage tray for sewer hoses with door
 "Flip up" extender for extra storage in basement
 Radiant Barrier Insulation on frame rails, roof and floor
 Aluminum wheels
 Utility center with winterization kit
 Ladder for access to roof
 TV lead in basement with 110v outlet

Standard Glide Ride bump absorbing hitch pin box. (See video on website)

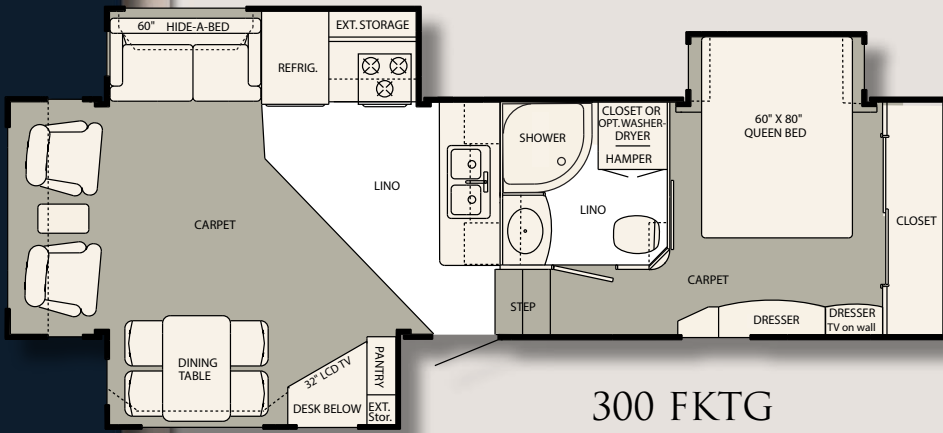


See dealer or website for list of priced options.

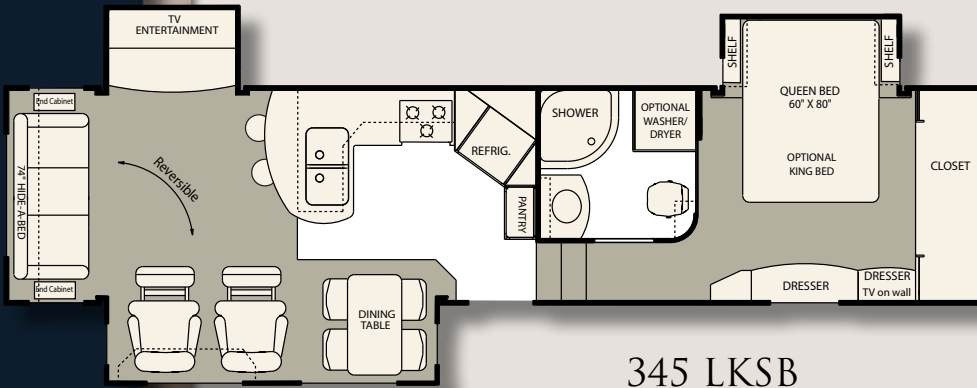
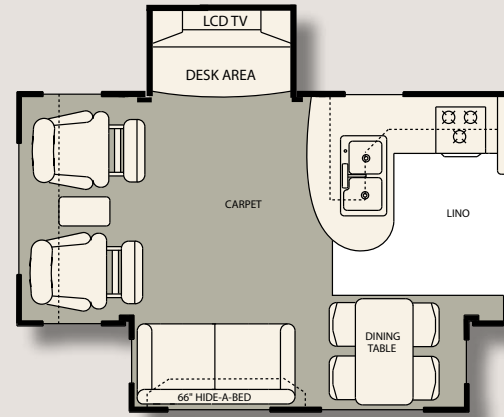
MODEL	Ext. Length	UVW	Hitch Wt.	GVWR	NCC	Tire Size	Brakes	Tanks Galley/Blk/Gry
300 FK	31' 8"	11,560	2,400	14,600	3,040	ST235/80R16E	12"x2"	NA/50/70
327 LK	33' 9"	11,540	2,100	14,700	3,160	ST235/80R16E	12"x2"	NA/50/70
330 FK	34' 11"	11,980	2,420	15,400	3,420	ST235/80R16E	12"x2"	NA/50/70
339 LK RSB	34' 11"	12,320	2,340	15,360	3,020	ST235/80R16E	12"x2"	32/50/50
339 RE RSB	34' 11"	12,260	2,340	15,360	3,100	ST235/80R16E	12"x2"	32/50/50
345 RE SB	36'	12,380	2,300	15,260	3,120	LT235/85R16G	12 1/4" x 3 3/8"	32/50/50
345 SK SB	36'	12,200	2,220	15,500	3,300	LT235/85R16G	12 1/4" x 3 3/8"	32/50/50
345 SK WTB	36'	12,100	2,100	15,500	3,400	LT235/85R16G	12 1/4" x 3 3/8"	32/50/50
345 LK SB	36'	12,280	2,360	15,500	3,280	LT235/85R16G	12 1/4" x 3 3/8"	32/50/50
345 LK WTB	36'	12,300	2,160	15,500	3,200	LT235/85R16G	12 1/4" x 3 3/8"	32/50/50
348 SB	36' 5"	12,400	2,180	15,600	3,200	LT235/85R16G	12 1/4" x 3 3/8"	NA/50/70
349 RSB	36' 5"	12,640	2,300	16,200	3,560	LT235/85R16G	12 1/4" x 3 3/8"	32/50/50
355 CK	36' 8"	13,100	2,560	16,400	3,300	215/75R17.5	12 1/4" x 3 3/8"	32/50/50
363 RSB	37'	13,140	2,700	16,400	3,260	215/75R17.5	12 1/4" x 3 3/8"	32/50/50



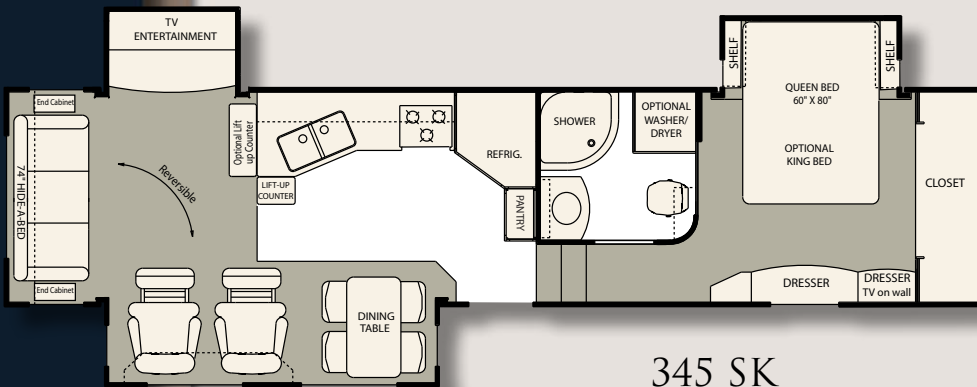
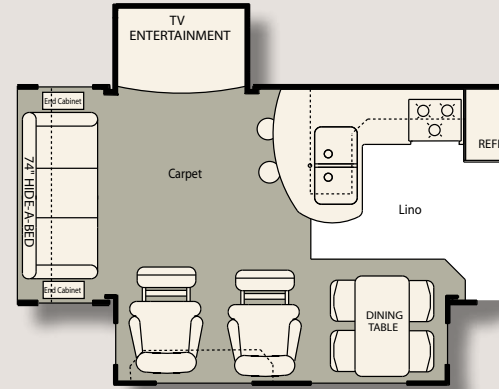
Bedroom Dresser



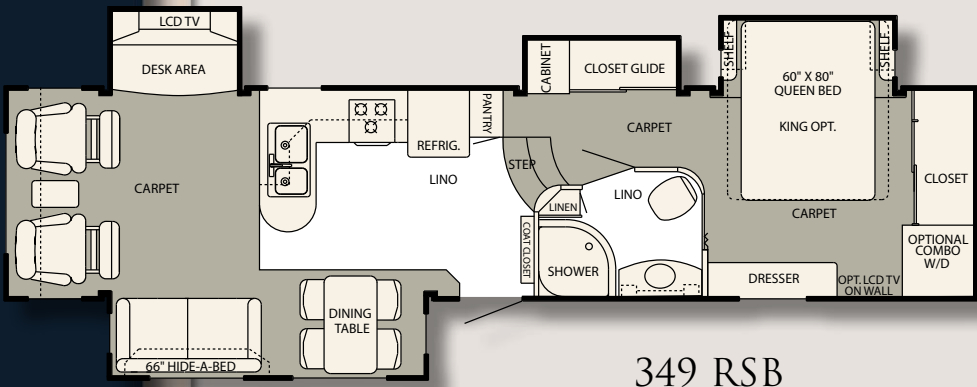
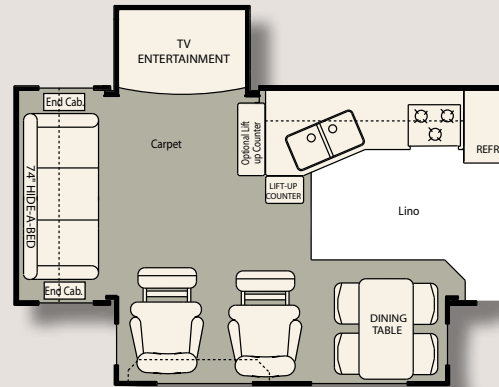
300 FKTG



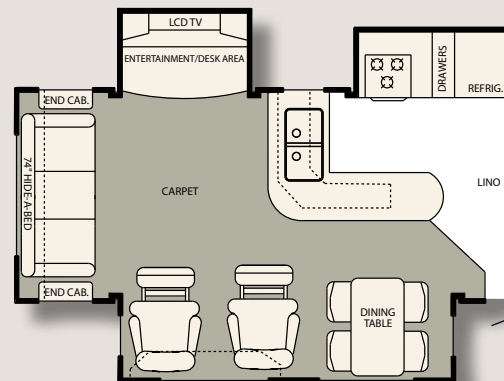
345 LKSB

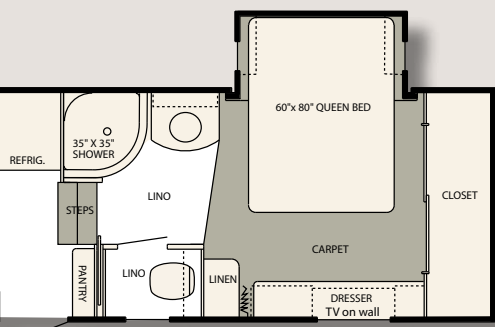


345 SK



349 RSB

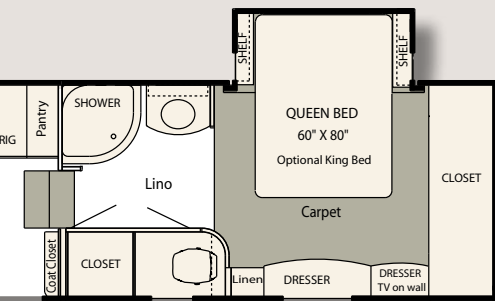




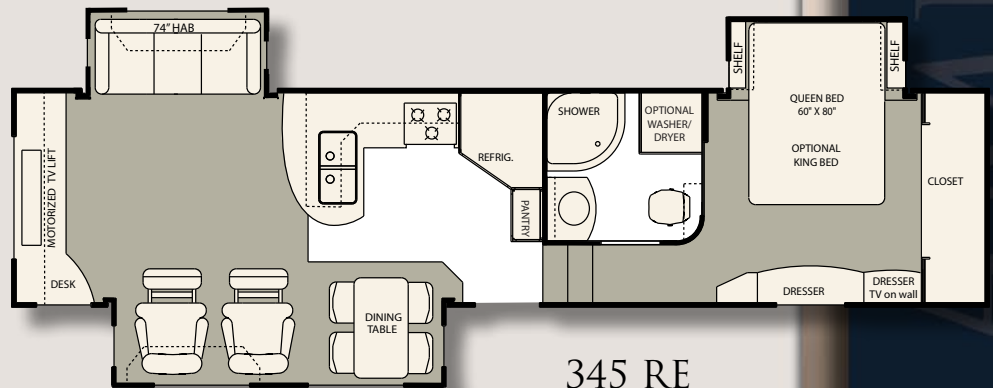
327 LK



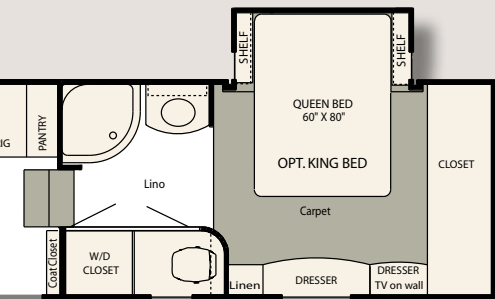
330 FKSBG



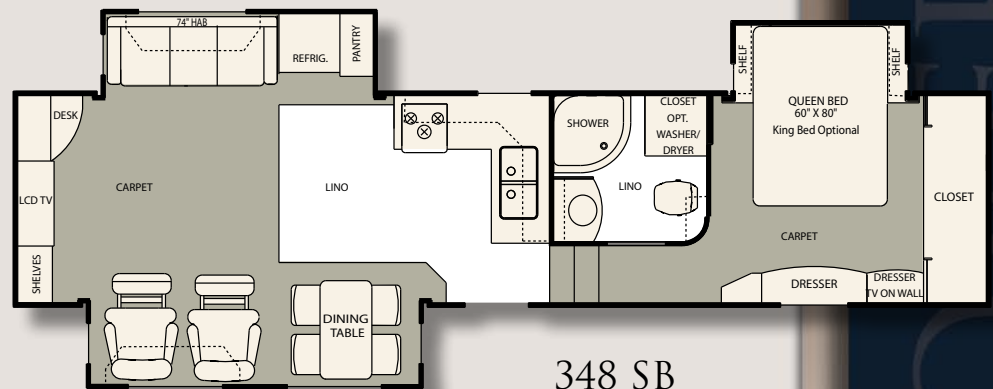
345 LKWTB



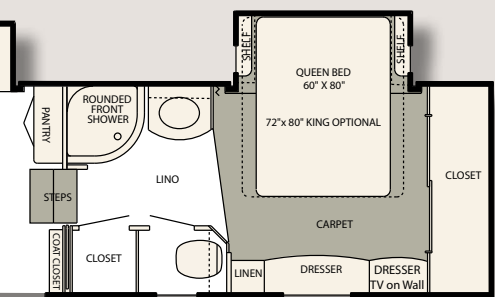
345 RE



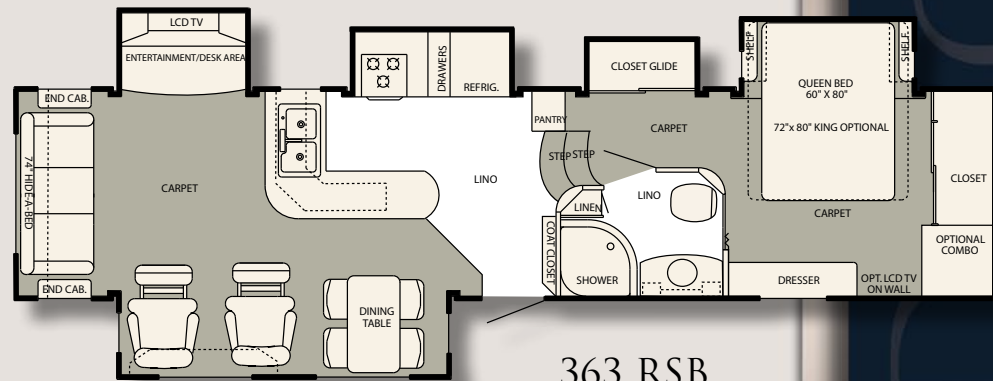
345 SKWTB



348 SB



355 CK



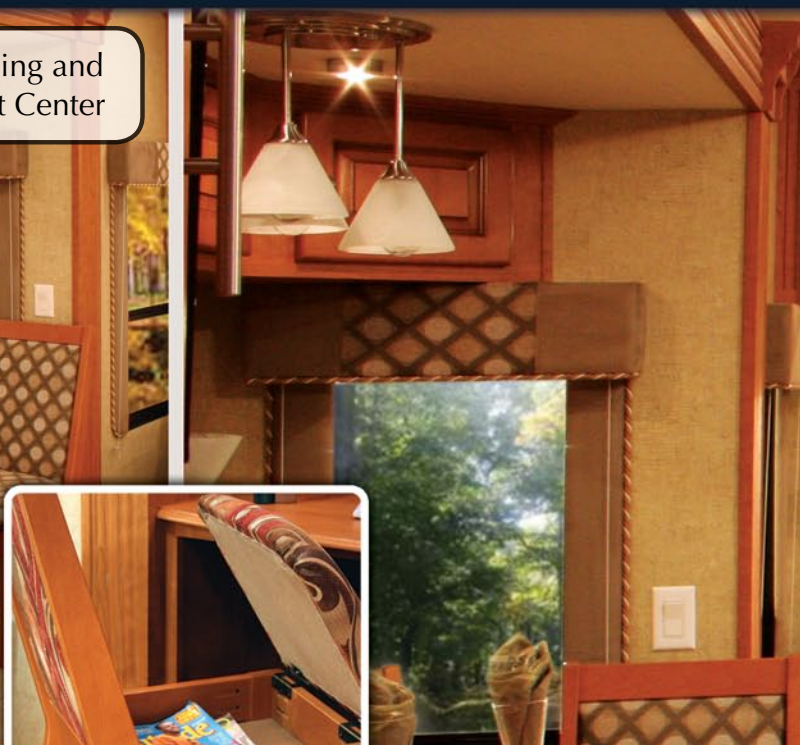
363 RSB

When you look beyond the superficial and inspect the Discover America closely, the "Design by Detail" philosophy that has impressed "extended user" 5th wheel owners for 40 years begins to be noticed. Exceptional fit and finish residential cabinetry is the first hint of a product that is truly unique and will serve some owner for many years. NuWa's efforts to optimize livability are not fully appreciated until the unit is put to use, but study of the functionality of important aspects of livability will reveal a passion of a manufacturer's concern for the customer's livability experience. Ask a HitchHiker owner how he feels about his trailer and be prepared to listen at length

to the many reasons he would buy HitchHiker again. He will admit that NuWa does not create a trouble-free trailer, but the effort to do so combined with exceptional service eliminates much of the ownership frustration experienced by many mass produced brand owners. Whether it's the conservative residential elegance, proven reliability of frame and structural strength, the practicality of livability design, the more expensive and reliable suspension and materials, or NuWa's famous factory service and parts support to customers, be prepared to listen to the commonly positive experiences of a satisfied 5th wheel owner. Begin to understand why the \$10,000-\$15,000



300 /330 Dining and Entertainment Center



Hinged Chair Storage



Rear Sofa / Entertainment Center



greater investment over mass produced brands will provide a less frustrating ownership experience. Also be aware history shows that used HitchHikers consistently bring approximately \$10,000 more in the used market than similar length mass produced brands. Thus while enjoying a superior trailer, know that much of your increased investment will be returned.

NuWa now sells its trailers at the factory to those customers not served by one of our regional dealers. You are always welcome at the factory, whether to take a tour, ask for assistance in deciding exactly how you want to order your dream trailer

from a NuWa dealer, or if no regional dealer is available, receive knowledgeable and courteous help completing a factory purchase and delivery. NuWa uses a "no haggle, nearer wholesale" pricing concept which allows customers to purchase from dealer or factory at same/similar price. And wherever you buy, NuWa always welcomes you at the nearby free campground or large factory service center where we do warranty/repair work and refurbish units up to 20 years old. Look the Discover America over and you will soon "discover" why it is the choice of so many experienced RVers.



300/330 Living Area



355 Dining Area

DÉCOR & TRIM

CABINETY OPTIONS

Beautiful Oak cabinetry is standard and Cherry Glaze finish cabinets are a popular option.



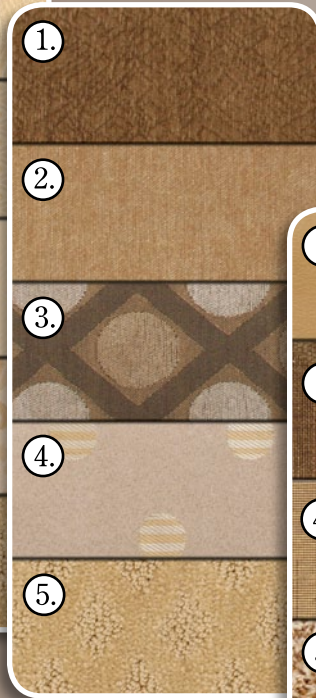
OAK



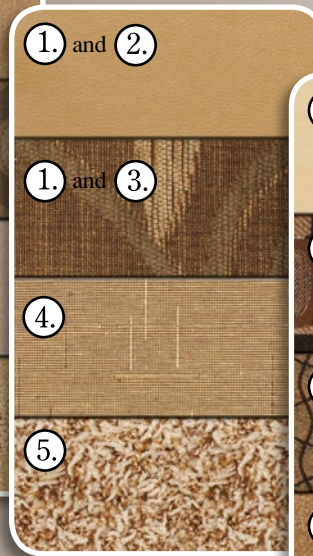
CHERRY



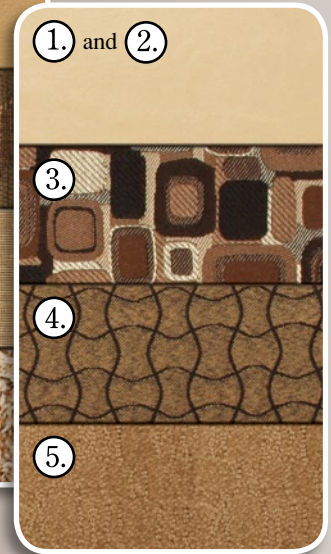
OPAL



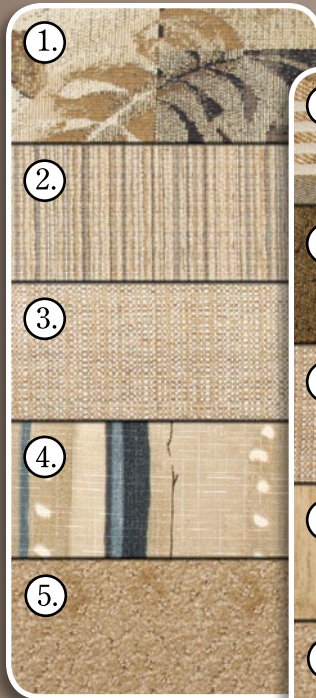
PESTO



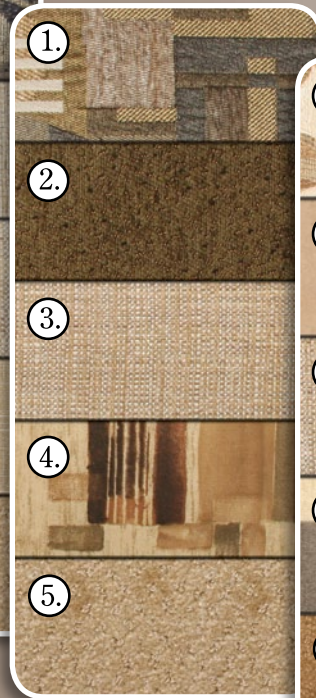
BAMBOO



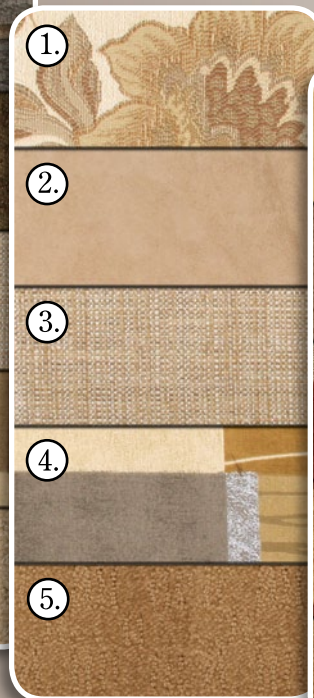
WHITE ONYX



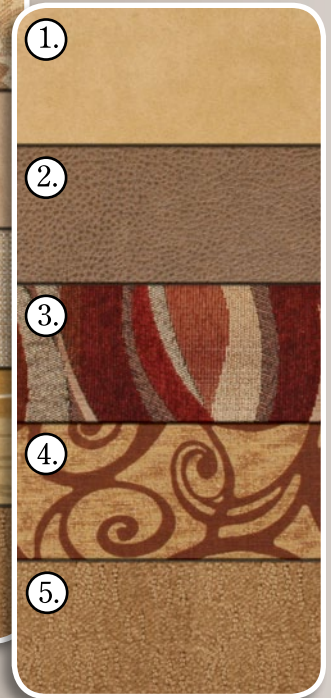
NEW REGAL



SPRUCE



SUNSET



NAPA

FABRIC ACCENTS

1.Sofa 2.Recliner 3.Dinette Chairs 4.Bed Cover 5.Carpet

Contact us for additional fabric options.