

2011 Travel Star®

LIGHT-WEIGHT EXPANDABLES AND TRAVEL TRAILERS BY STARCRAFT®

STARCRAFT 

CAMPING | *pure and simple.*

TRAVEL STAR

Simply towable.



SPORT

EXPANDABLE

TRAVEL TRAILER

STARCRAFT 



JUST RIGHT.

Getting away is easy with the 2011 Travel Star. Its ultra-light steel frame makes it light enough to be towed by most minivans, SUVs and crossovers*, while its durable construction makes it strong enough to go practically anywhere. And Travel Star comes standard with everything you need to enjoy your time in the great outdoors, without having to spend a great deal of money.

*Consult with your authorized automobile manufacturer and vehicle owner manual.

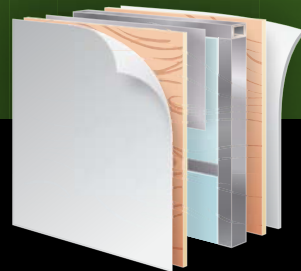
SIMPLY THE BEST CONSTRUCTION

We don't play games with our prices, and we don't make you pay for stuff you don't need. Instead, we put all of our time and energy into making a well-built, quality camper at an affordable price. In short, our campers are built for camping.



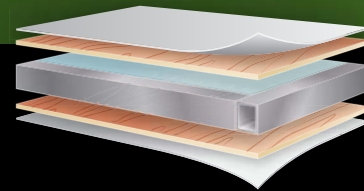
A FIRM FOUNDATION FOR DURABILITY

We vacuum bond plywood, a welded tubular aluminum frame and bead-foam insulation to create one of the industry's most durable floors (n/a Travel Star Sport).



VACUUM-BONDED FOR STRENGTH

Using TuffShell vacuum-bonded lamination, our walls combine welded aluminum framing, fiberglass sidewalls and metal backers, ensuring it can handle the toughest conditions.



A SEAMLESS ROOF FOR PROTECTION

Moisture and aging don't stand a chance against our vacuum-bonded roof with aluminum trusses, bead-foam insulation and rubber-covered plywood decking.



WATER-REPELLENT TENT

Our water-repellent, double-stitched Aqualon material doesn't stretch, shrink or crack, providing long-lasting durability even when it's up against Mother Nature (expandables only).





Travel Star 285RLSA / Vanilla



Travel Star 285RLSA / Vanilla



QUEEN-SIZED BUNK ENDS

There's plenty of sleeping room with our standard 1,100-pound rated queen bunk ends (expandable models).



22" LCD HDTV

Every night is family night with a 22" LCD HDTV with an optional 180-degree viewing angle (Premier Package).



ELECTRIC AWNING

Our hassle-free electric awning helps keep you cool on hot summer days (Premier Package).



EXPANDABLE SPACE

Spreading out just got easier with permanently attached, double-stitched Aqualon tents (expandable models).



GOODYEAR TIRES

Tow easy with Goodyear tires, E-Z lube axles, Torq-N-Go wheel nuts and rubberized suspension.

Travel Star Sport

SPORTY STYLE.

You'll love Travel Star Sport's kitchen, which comes standard with a three-burner range, 5 cu. ft. flush-mount refrigerator and high-rise mixing faucet. The Multi-Media sound system, available in the Customer Convenience Package, features an AM/FM/CD stereo, MP3 input jacks and speakers, so you can listen to your favorite music wherever the road takes you.

A GOOD NIGHT'S SLEEP

A pair of 1,100-pound rated queen sized sleeping areas give you plenty of room to stretch out at night (expandables).

REFRESHING RETREAT

Wash off whatever the road throws your way in the Sport's full bathroom complete with a vanity, mirror and shower with curtain and curved track.

STAY DRY

You'll get long-lasting durability, plus a 7-year warranty, with Travel Star's water-repellent, double-stitched Aqualon AquaShield tent material that doesn't stretch, shrink or crack (expandables).



Travel Star Sport 164BH / Raisin



5 things you'll simply love: Plywood-framed dinette and bed bases | 6-gal. water heater | 4 stabilizer jacks | Diamond plate front profile | 4" seat cushions



Travel Star Expandable Sport 176RB / Vanilla



Travel Star Sport 164BH / Raisin

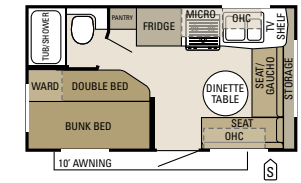


Travel Star Sport 193SS / Vanilla



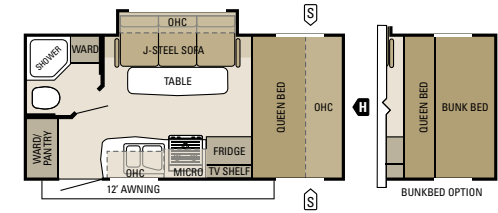
Travel Star Sport 193SS / Vanilla

Floorplans

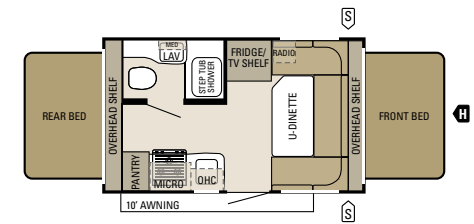


- S** OUTSIDE STORAGE
- H** TRAILER HITCH
- LAV** BATHROOM SINK
- MICRO** MICROWAVE
- OHC** OVERHEAD CABINETS
- FRIDGE** REFRIGERATOR
- WARD** WARDROBE

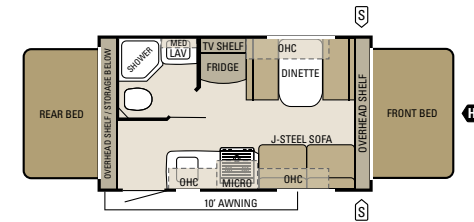
Travel Star Sport 164BH



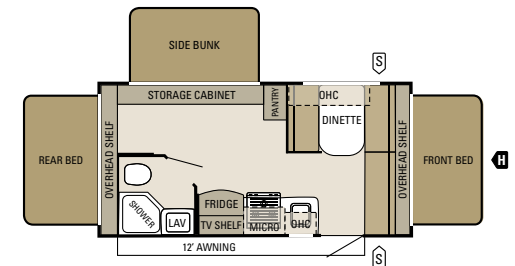
Travel Star Sport 193SS



Travel Star Expandable Sport 175RK



Travel Star Expandable Sport 176RB



NEW Travel Star Expandable Sport 187TB

Travel Star Expandable

SMART SPACE.

The living area in Travel Star Expandable has more than enough room to relax and enjoy quality time with family and friends, while the kitchen's 6 cu. ft. flush-mount refrigerator and three-burner range with hood and exhaust fan ensure there's plenty of room to prepare all your favorite snacks and meals.



SPACE TO SPRUCE UP

Travel Star Expandable's bathroom features a medicine cabinet with mirror and curved shower track.

DURABLE TENT

You'll get long-lasting durability with Travel Star's permanently attached tent base and water-repellent, double-stitched Aqualon AquaShield tent material.



5 things you'll simply love: Ball-bearing drawer guides (50-lb. capacity) | 6-gal. gas/electric water heater | 4 stabilizer jacks | Torsion axles | Aqualon tent



Travel Star Expandable 217RBSS / Vanilla

ROOM TO REST
 With two queen sleeping areas, a convertible dinette and J-Steel sofa, Travel Star Expandable can sleep up to seven adults.



Travel Star Expandable 237CKS / Raisin

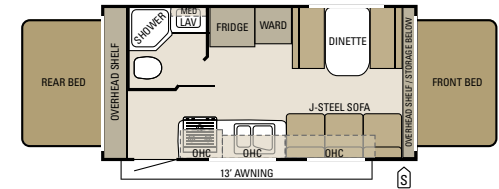


Travel Star Expandable 217RBSS / Vanilla

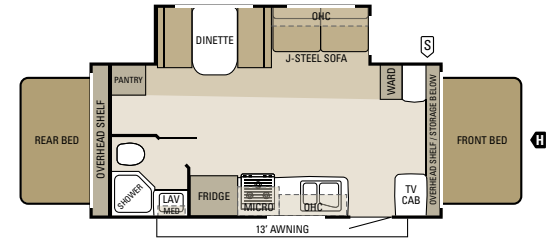


Travel Star Expandable 217RBSS / Vanilla

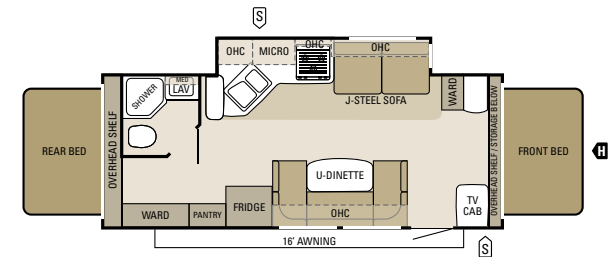
Floorplans



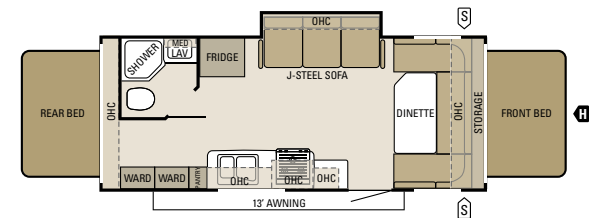
Travel Star Expandable 197RB



Travel Star Expandable 217RBSS



Travel Star Expandable 237CKS



Travel Star Expandable 237RBS

- | | |
|-----------------|-------------------|
| OUTSIDE STORAGE | MICROWAVE |
| TRAILER HITCH | OVERHEAD CABINETS |
| BATHROOM SINK | REFRIGERATOR |
| | WARDROBE |

Travel Star Travel Trailers

LIVE LARGE.

There's plenty of room for the whole family to spread out and enjoy a home-cooked meal with Travel Star's large dining area and full kitchen with modern appliances. And with a comfy J-Steel sofa and ample storage, you won't have to skimp on comfort or living space.

SECLUDED SLUMBER

Travel Star features a separate sleeping area with a decorative headboard, quilted bedspread and reading lights.

REFRESHING AMENITIES

A tub/shower combo, six-panel residential-style door and optional skylight give the bathroom a home-like feel.



Travel Star 299BHS / Raisin



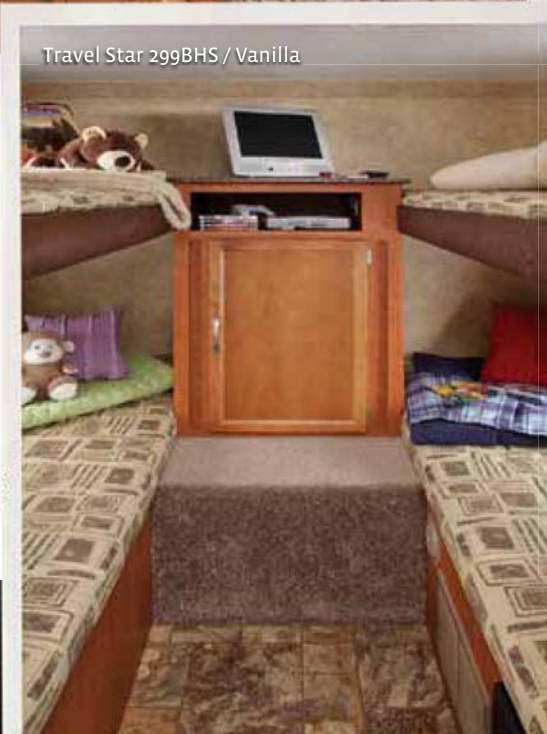
Travel Star 299BHS / 180-degree HDTV



things you'll simply love: Ball-bearing drawer guides | 6-gal. gas/electric water heater | 4 stabilizer jacks | Polished aluminum wheels | Diamond plate front



Travel Star 285RLSA / Vanilla



Travel Star 299BHS / Vanilla

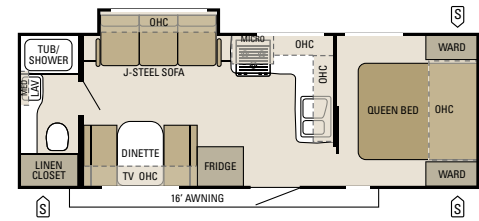


MOR/ryde suspension

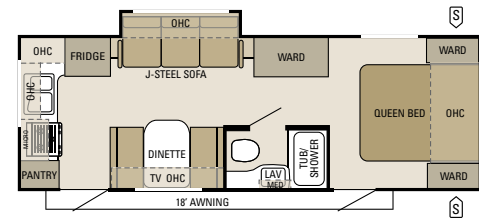


Travel Star 285RLSA / Vanilla

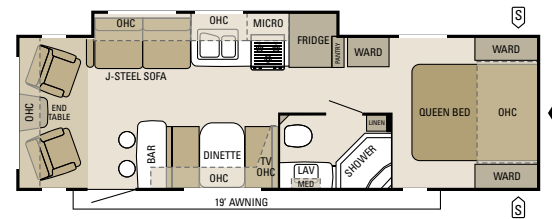
Floorplans



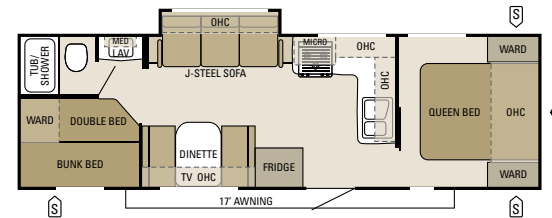
Travel Star Travel Trailer 245RBS



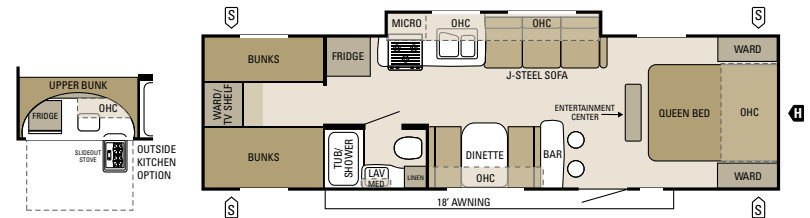
Travel Star Travel Trailer 245RKS



Travel Star Travel Trailer 285RLSA



Travel Star Travel Trailer 288BHS



Travel Star Travel Trailer 299BHS

- OUTSIDE STORAGE
- TRAILER HITCH
- BATHROOM SINK
- MICROWAVE
- OVERHEAD CABINETS
- REFRIGERATOR
- WARDROBE

Standards and options

SPORT
EXPANDABLE
TRAVELSTART

- N E EN**
- 6 panel residential style passage door
 - Bathroom exhaust ent
 - Marine toilet with foot flush
 - Medicine cabinet with mirror
 - Shower curtain with curved shower track
 - Towel holder
 - Tub/shower skylight
 - Vanity mirror

- N E E EN**
- Decorative headboard
 - Decorative reading lights
 - Large pass through storage (select models)
 - Privacy door
 - Roof tent
 - Shirt wardrobe (select models)

- N ENE EN**
- 3 burner range with 9,000 BTU SuperBurner and pie igniter
 - 5 cu. ft. flush mount refrigerator
 - 6 cu. ft. flush mount refrigerator
 - High rise mixing faucet
 - Large kitchen window
 - Oversized drawer in U dinette (select models)
 - Range hood with light and exhaust fan
 - Residential style 60/40 kitchen sink
 - Wallpaper border

- N N NE EN**
- 5/8" Structurwood main floor decking with PolyFlex wrap on the underside of the floor
 - 78" ceiling height
 - Bead board insulation (R 9 in roof, R 7 in walls)
 - Bead board insulation (R 9 in roof, R 9 in floor, R 7 in walls)
 - Bead board insulation (R 17 in roof, R 9 in floor, R 7 in walls)
 - Cabinetry crafted with screwed stile construction
 - Cable support system for bunk ends (interior mount)
 - Corrosion resistant frame
 - Electric powered slideout (slideout models)
 - FR s ooth fiberglass sidewall exteriors

SPORT
EXPANDABLE
TRAVELSTART

- One piece, sea less rubber roof material
- Tu Shell acrylic bonded laminated roof and sidewalls
- United, 1 1/2" laminated construction of floor
- Welded tubular aluminum sidewall and roof framework

- N E E E EN**
- 2" hitch coupler
 - 2 5/16" hitch coupler
 - 13" D range tires
 - 13" radial tires
 - 14" radial tires (select models)
 - 30" main entry door
 - 120V G.F.C.I. protected exterior receptacle
 - ABS fender skirts
 - Aerodynamic front profile
 - Amber patio lights with inside switch
 - AquaShield Aqualon water repellent sectionalized tent with 7 year warranty

- Black framed radius fiberglass entry door
- Bunk end tents permanently attached to bed base
- Bumper with drain hose carrier and end caps
- Carefree patio awning
- Exterior speakers, high output marine grade (2)
- E-Lube axles
- Front diamond plate
- Front window with flush mounted stone guard (164BH)
- Heavy duty, retractable entrance step
- Impact resilient composite wheel wells
- Lockable baggage doors, insulated and radius cornered with heavy duty grab handle

- Molded rain guttering with extended drip spouts
- R/ryde CRE 3000 axle equalizer
- Painted bottom radius skirting
- Pass through storage compartment
- Rep or outside grill
- Self supporting lockable end bunks (no poles required)
- Stabilizer jacks (4) with sand pads
- TorFlex independent torsion axle rubber ride suspension system
- TorGo wheel nuts
- White spoked wheels

SPORT
EXPANDABLE
TRAVELSTART

- N NE E EN**
- Ball bearing drawer guides 50 lb. capacity with full drawer extension
 - Brown Sugar doors and drawers
 - Cable and satellite TV prepped
 - Crank up HDTV antenna with signal booster
 - Deep quilted cushions for bunk(s)
 - Fan lights in bunk (2)
 - Mini blinds throughout
 - Multi-media Sound System A /F /CD/stereo with 3 input deck and 2 speakers
 - Pleated night shades
 - Privacy curtains for bunks
 - Queen bed side bunk mats (2)
 - Residential furniture, designed and made by Starcraft
 - Wall to wall vinyl flooring

- N E WE N WE E EN**
- 6 gal. gas water heater
 - 12V de-ice and water pump
 - 12V electrical system with deluxe 120V 35 amp power converter
 - 12V electrical system with deluxe 120V 45 amp power converter
 - 30 amp power cord
 - 18,000 BTU furnace with auto ignition
 - Auto ignition furnace with wall thermostat
 - Double 20 lb. propane gas bottles
 - Gravity fill or water
 - Hookup for city water
 - Outside shower
 - Rotocast fresh water holding tanks
 - Single 30 lb. propane gas bottle, with regulator
 - System monitor panel
 - Water heater bypass system
 - Winterization kit

- N E E EN**
- Breakaway switch
 - Deadbolt on entrance door
 - Dual hitch safety chains
 - Egress window(s)

SPORT
EXPANDABLE
TRAVELSTART

- Fire extinguisher
- Propane/carbon monoxide alarm
- Smoke alarm
- Tinted safety glass windows

- N**
- 2 bed at heaters
 - Customer Convenience package
 - Customer Convenience package with 15,000 BTU furnace outside kitchen (299BHS)
 - Outside grill
 - Tent
 - Polished aluminum wheels
 - Trailer package 22" LCD TV, CD/DVD player with 3 input deck, electric tongue jack, Carefree Trailer 12V electric patio awning, large folding grab handle with bunk (193SS)
 - Water purifier

- E N NEN E E**
- 6 gal. gas/electric DSI auto ignition water heater
 - 13,500 BTU A/C with wall thermostat
 - 13,500 BTU A/C with wall thermostat and louered directional ceiling fans
 - ABS gas bottle carrier with access hatch to propane valves
 - ABS tub surround
 - Bathroom power vent
 - Carefree patio awning
 - Microware oven with carousel
 - Multi-media Sound System A /F /CD stereo with 3 input deck and 2 speakers
 - Outside shower
 - Outside speakers (2)
 - Tent
 - Polished aluminum wheels
 - Spare tire with carrier
 - Stabilizer jacks (4)
 - Water heater bypass system

Décor

RAISIN



VANILLA



- 1 Sofa (two-tone) 2 Accent fabric 3 Bedspread
- 4 Chair 5 Drapery 6 Wood 7 Carpet

Specifications

	Floorplan	Exterior Length	Exterior Height with A/C	Interior Height	Unloaded Vehicle Weight (lbs.)	Dry Hitch Weight (lbs.)	Gross Vehicle Weight Rating (lbs.)	Cargo Carrying Capacity (lbs.)	Fresh Water Capacity (gal) (includes water heater)	Gray Waste Water Capacity (gal.)	Black Waste Water Capacity (gal.)
TRAVEL STAR SPORT	164BH	18'	115"	78"	2,795	405	3,500	705	30	30.5	11
	193SS	20' 6"	118"	78"	3,555	315	4,750	1,195	30	30.5	11
TRAVEL STAR EXPANDABLE SPORT	175RK	17' 11"	115"	78"	2,880	475	3,500	620	28.5	30.5	22.5
	176RB	18' 6"	115"	78"	3,015	435	3,500	485	28.5	30.5	22.5
	187TB	20' 10"	116"	78"	3,530	455	4,400	870	28.5	30.5	22.5
TRAVEL STAR EXPANDABLE	197RB	20' 8"	116"	78"	3,540	435	4,950	1,410	28.5	30.5	22.5
	217RBSS	22' 5"	125"	78"	4,650	590	6,000	1,350	28.5	30.5	22.5
	237CKS	24' 11"	125"	78"	4,575	710	6,500	1,925	28.5	30.5	22.5
	237RBS	24' 5"	115"	78"	4,170	475	4,950	780	28.5	29.5	22.5
TRAVEL STAR TRAVEL TRAILERS	245RBS	27' 8"	123"	78"	4,685	585	6,250	1,565	28.5	45	30.5
	245RKS	27' 9"	123"	78"	4,925	520	6,500	1,575	28.5	45	30.5
	285RLSA	30' 5"	123"	78"	5,245	715	7,000	1,755	28.5	30.5	30.5
	288BHS	30' 10"	123"	78"	5,070	670	6,500	1,430	28.5	45	30.5
	299BHS	33' 4"	123"	78"	5,560	615	7,500	1,940	28.5	30.5	22.5

Unloaded Vehicle Weight (UVW): Sometimes referred to as "Dry Weight," UVW means the typical weight of this trailer as built at the factory. The UVW, as used in product literature and other promotional materials, does not include cargo, fresh water, propane, options or dealer-installed accessories.

Gross Vehicle Weight Rating (GVWR): GVWR means the maximum permissible weight of the trailer, including the UVW plus passengers, personal items, all cargo, fluids, options, and dealer-installed accessories. The GVWR is equal to or greater than the sum of the UVW and the CCC.

Cargo Carrying Capacity (CCC): CCC means the maximum weight of all passengers, personal items, food, fresh water, propane, tools, other cargo and dealer-installed accessories that can be carried by the trailer. CCC is equal to or less than GVWR minus UVW. The addition of options will decrease the CCC.

Hitch Weight (HW): The hitch weight, as used in product literature and other promotional materials, does not include cargo, fresh water, propane gas, options or dealer-installed accessories. The addition of these types of items will either add to or subtract from the stated hitch weight.

It is important for your safety and enjoyment that your tow vehicle be adequately sized and equipped to tow and handle the GVWR of the RV you select. Review weights and rating of your tow vehicle and consult a competent advisor for questions or advice. Whether you are new to RVing or a veteran, get a feel for the performance of your tow vehicle and the RV together before heading out on the roadways. When you tow an RV, you must drive differently than you do when driving a single vehicle. Practice hooking up, driving, backing up and braking in a safe environment or seek out professional instruction. Starcraft affixes a weight label to each RV which lists weight information for that vehicle. See specification chart above.

Built on tradition.

The Starcraft name has been around for more than 40 years – becoming one of the most dependable names in the camping industry. Today, our strong balance sheet and family-oriented business approach means we'll be around for decades to come. And you can bet our campers will continue to come with **everything you need to have a great time in the great outdoors, at a price that guarantees you will.**

One-year warranty

The Starcraft warranty is a manufacturer's limited warranty. Each Starcraft is warranted to the original purchaser for twelve (12) months from the original date of purchase against defects in materials and workmanship. Starcraft's limited warranty is not transferable. For a copy of the limited warranty with full terms and conditions, ask your local Starcraft dealer.

One-year roadside assistance

Travel worry-free with the complimentary Coach-Net Roadside Assistance program, which gives you immediate access to dependable roadside assistance with a simple phone call.

Why a Local Starcraft Dealer is Important to You

Establishing a solid relationship with your local Starcraft dealer is a key component in the enjoyment of your new Starcraft. By purchasing from a local dealer, you will have a convenient location for sales, parts and service support.



STARCRAFT

CAMPING | *pure and simple.*

© Starcraft RV • Topeka, IN  
www.starcraftcamping.com

See dealer for further information and prices. All information in this brochure is the latest available at the time of publication approval. Starcraft reserves the right to make changes and to discontinue models without notice or obligation. Photos in this brochure may show optional equipment and props for photography purposes. RV's built for sale in Canada may differ to conform to Canadian codes.

www.starcraftcamping.com | STOP BY OUR HOME ON THE WEB FOR MORE INFORMATION OR TO FIND A DEALER NEAR YOU.

