

# STANDARD FEATURES

## GLIDE ROOM FEATURES

Hydraulic Rack and Pinion glides w/manual override  
Bedroom and non-flush floor glides are electric motor design  
Glides have insulated floors and laminated walls & ceilings  
Individual control switch for each glide  
Overhead cabinets above sofa or chairs  
Two Halogen lights with dimmer switch

## BEDROOM & BATHROOM

Soft top 60" x 80" queen bed with storage under  
Shelves and overhead cabinets near bed  
Residential dresser w/drawers on full extension glides  
15,000 BTU air conditioner with heat pump  
"Blackout" day/night shades  
Spacious fiberglass seamless shower with glass door  
Power Vent/Dome with wall switch  
Thetford Porcelain Toilet with water spray attachment  
Solid surface countertop and vessel vanity sink  
High intensity lighting  
Towel bar(s)  
Adjustable heat and A/C ducts in bath area  
Designer linoleum in toilet and lavatory area  
LCD TV and DVD player

## KITCHEN & APPLIANCES

15,000 BTU Air Conditioner "H" ducted whisper quiet  
Heat pump for A/C w/digital Thermostat  
10 Gal. DSI/LP/110v Rapid Recovery Water Heater  
Water Heater bypass system  
Domestic OTR Microwave with built in vent  
Sealed burner stove  
Three burner stove with stove cover and oven (Recessed)  
Two stage whisper quiet furnace  
60 amp converter/battery charger  
50 amp service w/detachable power cord  
Fire extinguisher, LP, smoke, and CO detectors  
Prepped for washer/dryer  
Square raised panel doors with new double radius profile  
Residential solid surface countertop with backsplash  
Residential stainless steel sinks  
Single lever faucet with pull out spray  
Multiple drawers including pot & pan drawer  
Silverware tray  
Full extension ball bearing drawer glides  
Pantry with shelves and/or drawers  
Coat closet at most entrance doors  
Designer linoleum in kitchen and entry  
Fluorescent lighting over kitchen counter  
Rope lighting above cabinets (some models)  
Residential concealed cabinet door hinges  
Space for large wastebasket in most models  
Toe Kick on Kitchen cabinets with accent lighting

## LIVING, DINING, & DESK AREA

DVD/CD player w/sound bar speakers  
Cable, internet and phone connections at desk  
DVD/CD storage and space for Satellite receiver  
Winegard TV antenna with signal amplifier  
Wired and prepped for satellite dish (Tripod & roof mount)  
46" LCD HD capable flat screen TV downstairs  
TV/VCR distribution for multi-program viewing  
TV lead in basement with w/110v outlet  
74" full bed Hide-A-Bed sofa w/innerspring mattress  
82" queen bed Hide-A-Bed sofa w/innerspring mattress (38CKRD)

Two comfy glider rocker recliners  
Day/night shades  
Residential carpet and pad  
Hidden leaf dining table with four chairs  
Fantastic Vent w/wall mounted control  
Ceiling fan with light in living or kitchen area  
Exceptional lighting for reading  
Dimmer switch for halogen lights  
Oak hardwood cabinets and doors  
Fabric Ceiling (increases insulation)  
Central vacuum with vac-pan

## FRAME & SUSPENSION

14" C channel frame  
Cross arm stabilizers on front jacks  
Frames are powder coat painted  
Steel braces support water tank  
Heavy duty outriggers to which floors are bolted  
7000 lb. axles with Nev-R-Lube bearings  
Heavy duty greasable spring shackles  
Heavy Duty shock absorbers  
Trail Air Equa flex rubber suspension  
Demco Glide Ride hitch pin box (regular or extended)  
"H" range tires with 8 hole aluminum wheels (Tandem Axle Models)  
"E" range tires with 8 hole aluminum wheels (38 Triple Axle Models)  
Electric Rear Stabilizer Jacks  
Dual motor front jacks with snap locks  
Wider and deeper entrance step lower to ground  
3 3/8" x 12 1/4" heavy duty brakes (two axle)  
2" x 12" brakes (38")

## EXTERIOR, STRUCTURAL & MISC.

30 lb. LP bottles w/auto changeover regulator  
Two (group-size 27) 12 Volt batteries  
Battery cutoff switch for storage protection  
Folding Entry assist handle  
Deluxe 9000 Series Metal Wrap A&E Awning  
1" insulated baggage doors w/paddle type handles  
Gas struts hold baggage doors in up position  
Pre-wired for solar panel battery maintenance  
Hi-Gloss automotive fiberglass laminated sidewalls  
Heated subfloor and holding tanks  
Black holding tank flush kit  
Hitch and baggage area lights  
Exterior Security Lights  
Super Insulated Vacu-Bonded walls (see video on website)  
6" truss rafters to maximize insulation and strength  
Wood decked "walk anywhere" rubber roof w/vented attic  
Solar safety glass windows  
No window in entrance door to reduce heat & maintenance  
Water manifold system for individual control of fixtures  
Large capacity pass through storage with lockable doors  
Separate storage area for two folding lawn chairs  
Separate vented storage tray for sewer hoses with door  
Radiant Barrier Insulation  
Upgraded graphics  
Aluminum wheels  
Utility Center (with winterization kit)  
SeeLevel Monitor System (external tank sensors)  
Ladder for Access to Roof

**NuWa**



# CHAMPAGNE

HITCHHIKER 5TH WHEELS



## *Luxury...Elegance...Beauty...Livability*

These are words that describe the Champagne Edition and most other high end 5th wheel brands. But as the saying goes, "beauty is more than skin deep". The fact is there are less than six high end 5th wheel brands that truly understand the needs and expectations of full time RVers. Some would say that you could count them on one hand. NuWa is one of these brands, and continues to prove to customers why it might be the best value of all, even though it is not inexpensive. What sets NuWa apart is the "intangible" and difficult to see features that make a difference in the user's RV experience.

NuWa is the most experienced 5th wheel manufacturer, and pioneered a number of innovations in the fifth wheel product including the first glide room concept. The "design by detail" philosophy is NuWa's constant corporate challenge to produce superior livability and reliability. Consider the 36LKRSB model with more closet storage than any 5th wheel on the market, or the elegant 38' CKRD with its unique rear dining area. Have you ever seen such spacious baths and so many drawers throughout? Notice the functional usefulness of the new entertainment center and the residential feel of the living room areas! But it's even more than livability; it's also the reputation for durability and reliability proven by years of product refinement. NuWa is famous for its close relationship with customers. The "open ears" attitude and a goal of optimizing reliability has truly created an exceptional fulltimer trailer.

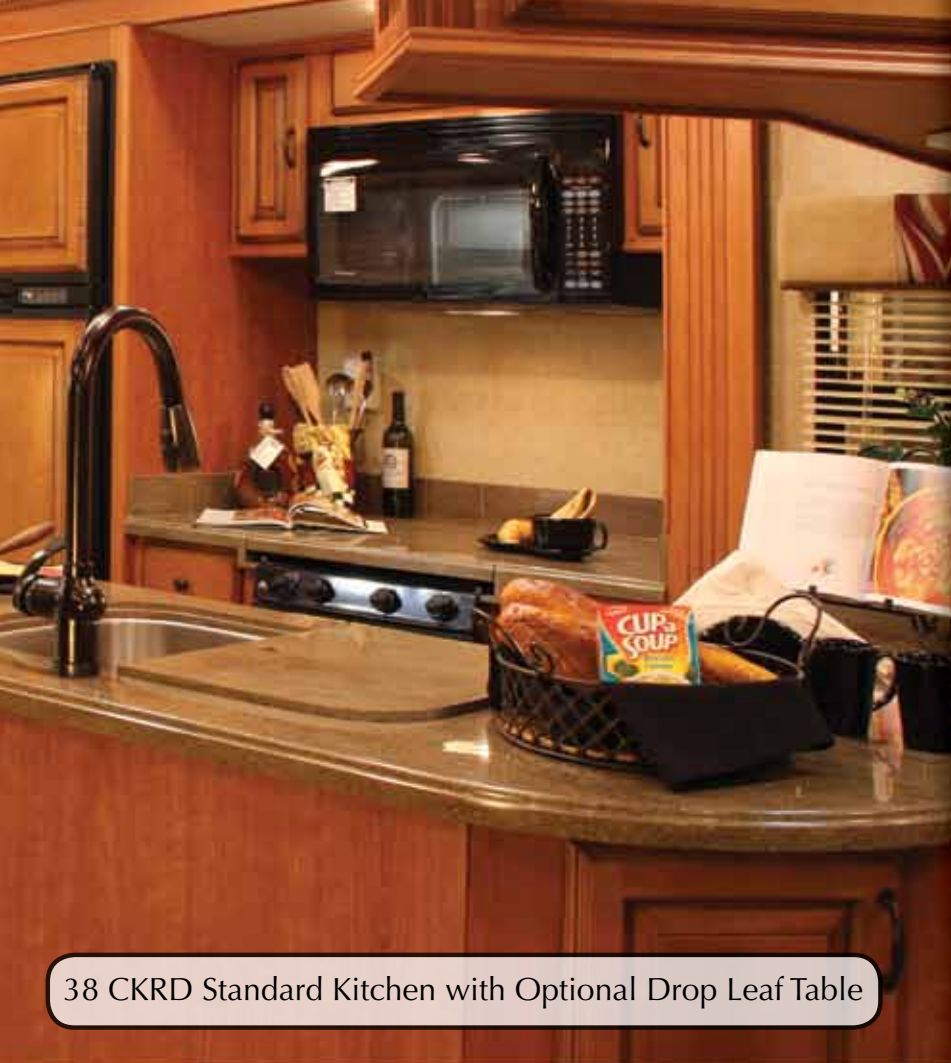
One of the most important intangible values that can be provided is exceptional customer service. NuWa is famous among RVers for its consumer factory service support and response to customer requests for assistance and information. Evidence of the statements can be best seen by visiting [www.nuwa.com](http://www.nuwa.com), known as one of the most informational and valuable manufacturer websites. Another valuable tool for potential Champagne owners is [www.nuwaowners.org](http://www.nuwaowners.org), where owners discuss their experiences, answer questions and offer suggestions about features, maintenance tips, hitches and tow vehicles. Visiting these two sites or taking the factory tour, via video or at the plant in Chanute, Kansas, typically causes customers to realize just how different NuWa is. The Champagne is beautiful and elegant. That's the easy part; it's the intangible features that make the real difference of a satisfied customer.



38 CKRD with Optional Banquette and Drop Leaf Table







38 CKRD Standard Kitchen with Optional Drop Leaf Table



36 LKRSB Kitchen



38 LKTG Kitchen



# CHAMPAGNE



OAK



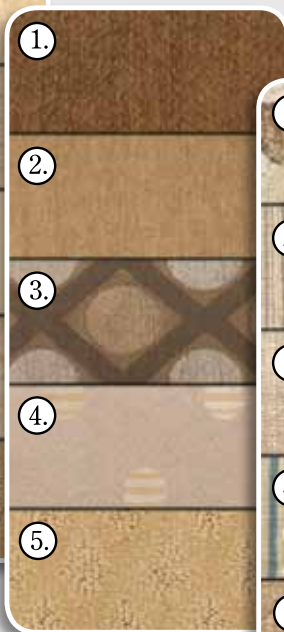
CHERRY

## CABINETRY OPTIONS

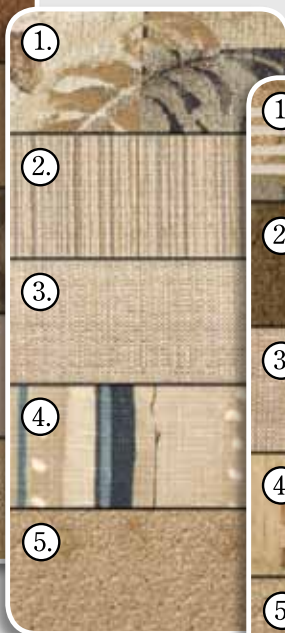
Beautiful Oak cabinetry is standard and Cherry Glaze finish cabinets are a popular option.



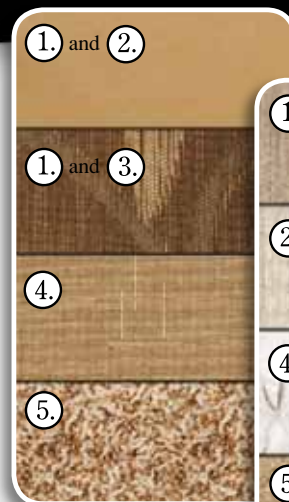
OPAL



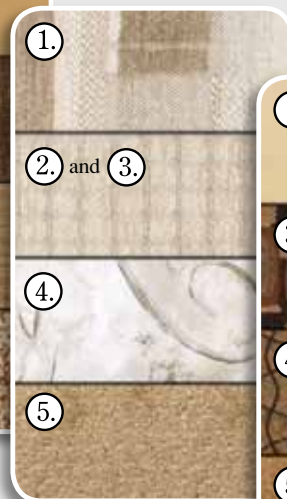
PESTO



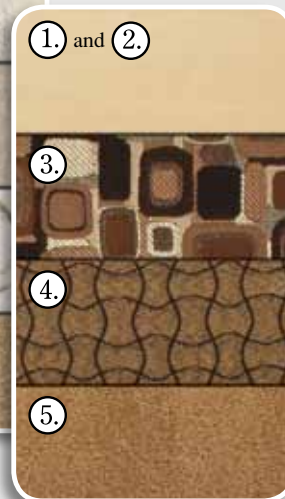
NEW  
REGAL



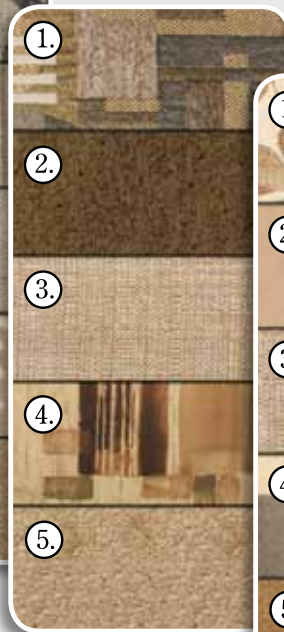
BAMBOO



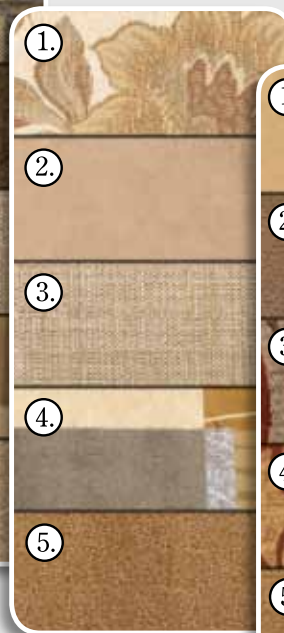
NEW  
MINERAL



WHITE  
ONYX



SPRUCE



SUNSET



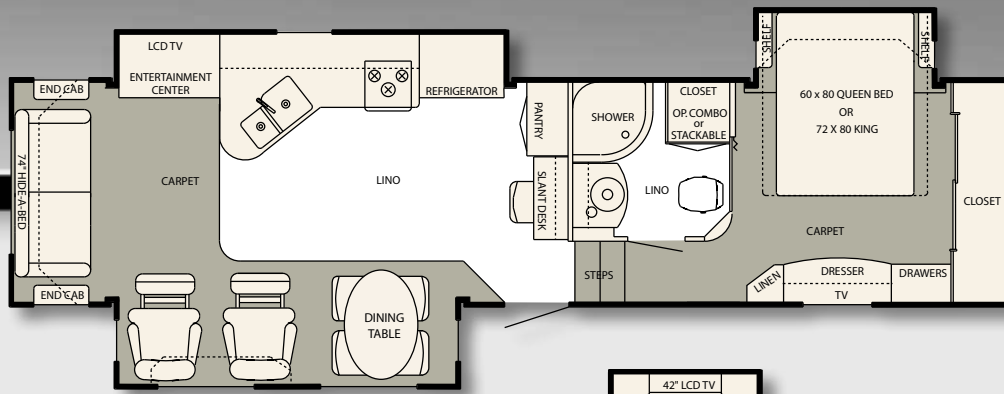
NAPA

## FABRIC ACCENTS

1.Sofa 2.Recliner 3.Dinette Chairs 4.Bed Cover 5.Carpet

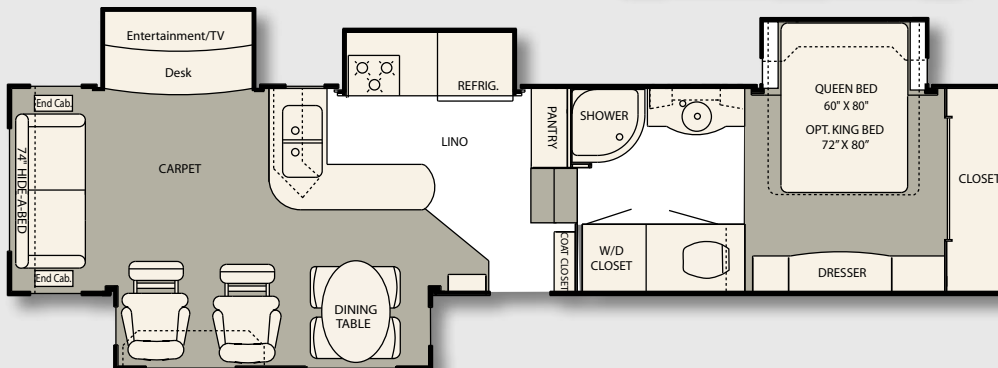
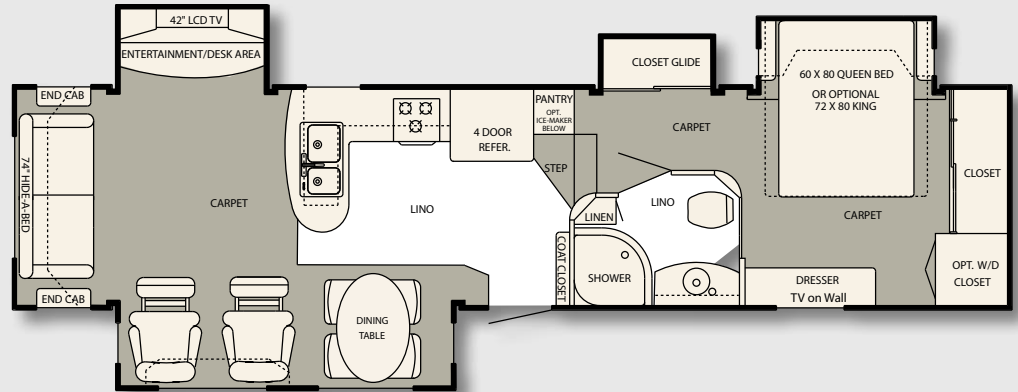
## SPECIFICATIONS

MODEL	Hitch Wt.	UVW	GVWR	NCC	Gross Axle Weight Rating	Ext. Height	Ext. Length	Fresh Water	Tanks Galley/Blk/Gry	Width	Tire Size
35 RLSB	2,760	13,900	16,700	2,800	7,000	12' 9"	36' 10"	100	NA/50/70	100"	215/75R17.5H
36 LKRSB	2,700	13,900	16,700	2,800	7,000	12' 9"	37' 4"	100	50/50/50	100"	215/75R17.5H
38 CKQG	2,600	14,800	19,000	4,200	7,000	12' 10"	39' 7"	100	50/50/50	100"	ST235/80R16E
38 CKRD	2,640	15,140	19,000	3,860	7,000	12' 10"	39' 7"	100	50/50/50	100"	ST235/80R16E
38 LKTG	2,660	14,220	19,000	4,780	7,000	12' 10"	39' 7"	100	50/50/50	100"	ST235/80R16E



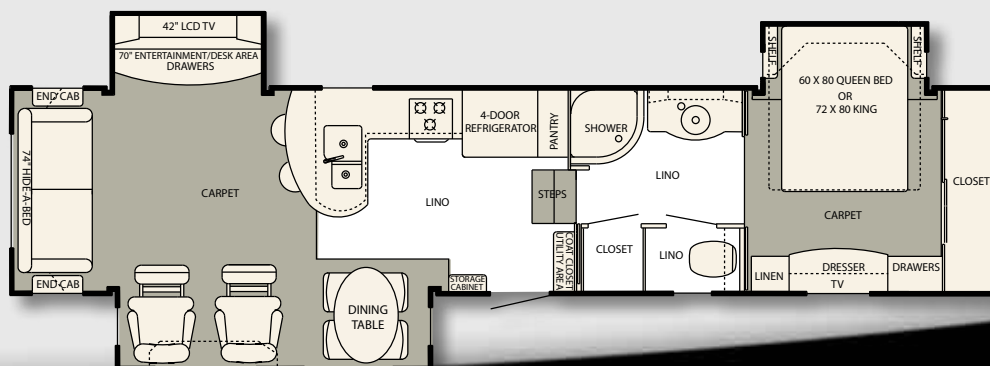
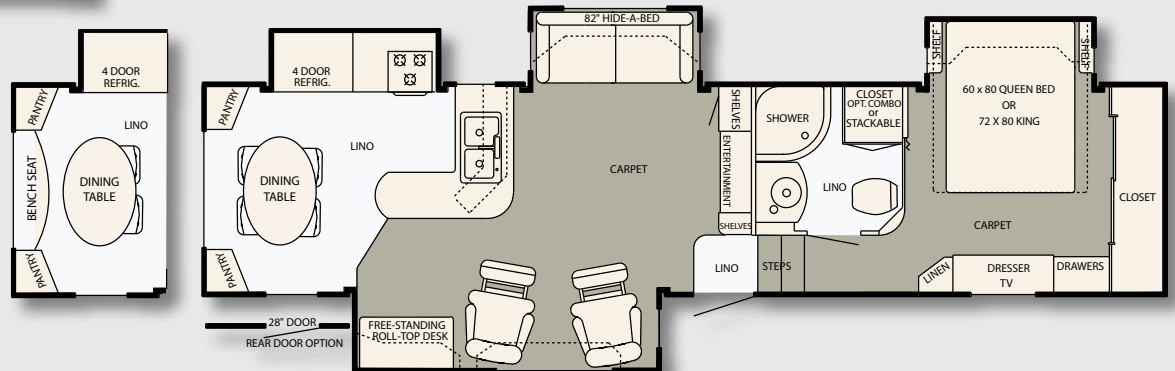
35 RLSB  
coming in mid 2011

36 LKRSB



38 CKQG

38 CKRD  
& BANQUETTE OPTION



38 LKTG





38 CKRD Living Area



36 LKRSB Shown w/Optional FlexSteel Theatre Seating



Entertainment



38 LKTG Bathroom



38 CKRD Kitchen



Vessel Sink



38 LKTG Bedroom

t Center