

DISCOVER AMERICA

HITCHHIKER 5TH WHEELS



Shown with Platinum graphics upgrade.



DISCOVER YOUR FAVORITE WAY TO ESCAPE

The experienced "extended stay" RV'er and the newly retired have as a dilemma today, how to continue their plans for extended RV travel. More people are discovering the simple pleasures of temporarily or permanently abandoning the "stick house" and moving in their 5th wheel from one desired location to another in this beautiful country of ours. The dilemma is how to balance the need for residential livability and quality in the 5th wheel with the realities of towing and fuel costs. We at NuWa promote the fact that "extended stay" RVing is both "green" and a more economical approach to retirement, because less energy is used than if one maintained the "big home". The typical fulltimer doesn't "pound the highways" day in and day out; he sits in one "base camp" for a period of time until he is ready to move on to his next destination, so excess use of fuel is not nearly as much a reality as it is an emotional issue. Large luxury "full time" rigs such as our Champagne will continue to be popular with those who are willing to tow with MDT vehicles or "upgraded" one ton vehicles such as Ford's Tow Boss. But our research shows that most people want to limit their trailer to a weight that can be towed by the one ton trucks. But they also want to optimize spaciousness and livability. They know that it doesn't take much more fuel to tow the upper limits of that truck's capacity than it does the lower limits.

For 2009 NuWa has positioned its Discover America product to meet this need for a large, truly "high end" 5th wheel that can be towed by one ton vehicles. The Discover America combines much of the quality and features of the Champagne at a weight that runs about 1000 pounds less. The DA models are not "wide body" as is the Champagne, but the multiple glides increase square footage without greatly increasing length or weight. Thus there are many choices of length and design available from the most experienced and one of the most respected 5th wheel manufacturers.

The weights of the Discover America are not light, but they are accurate and include many items that would be optional on other brands. As well, the Discover America is not inexpensive, however more and more customers mention on the popular NuWa owner's forum, that they would gladly make the slightly greater investment again.

If you are looking for a reliable "extended stay" 5th wheel to meet your quality, livability and performance expectations, but want to stay in the 15,000-16,500 lb. GVWR range, then take a good look at the Discover America. Unique floorplans, exceptional livability and proven reliability and service support cause those who buy say they would definitely do the same again.

349 RSB



Discover AM



ER
ERICA

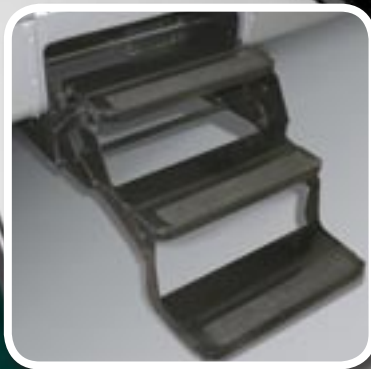
RADIANT TECHNOLOGY

NuWa announces the addition of Radiant Technology “reflective” insulation in roofs, floors (also glide rooms), under end caps and under the bedroom floor of the DA and CE products. This “space age” material was first used to protect astronauts in space, where temperatures facing the Sun can be 450°F and the shaded side can be -250°F at the same time.

This reflective insulation will noticeably help keep your HitchHiker comfortable in any climate. The added insulation will take some load off the air conditioner and should extend the compressor life. As well, it is hoped this standard feature will reduce the need for two air conditioners for some of our customers. In Winter not only should less propane energy be required to heat your trailer, but when combined with the quieter “two speed” furnace, the lower speed fan should run more which means less noise.

Radiant Technology insulation reflects Summer heat away from and Winter heat back into the trailer at a stated rate of 97% efficiency. Conventional insulation on the other hand fills up with heat and when full, transfers it into the unit. Combining these two methods creates a superior design. And when combined with NuWa’s famous “blue Dow” foam sidewall material with 25% more insulation value, we feel there may be no better insulated 5th wheel at any price point. Note: R Factors shown do not give consideration to the increased R factor of the Radiant Technology material, due to the variable heat factor.

Lockable Paddle Handle Latch



The wider, deeper steps are lower to the ground than many brands and they are easier and safer to use.



One Piece Rubber Roof

5/16" Roof Decking

Radiant Barrier

4½" of Fiberglass Insulation

5" Wood Roof Truss Rafter



Gel Coat Fiberglass

Luan Board

Aluminum Substructure

1½" Blue Dow Insulation

Interior Luan

Interior Vinyl

Upper Floor

- 1. Carpet
- 2. Padding
- 3. Radiant Barrier
- 4. 3/8" Floor Decking
- 5. 3/4" Dow Blue
- 6. 1/4" Luan

Main Floor Layers

- 1. Carpet
- 2. Padding
- 3. Floor Decking 3/4"
- 4. Radiant Barrier
- 5. Darco Moisture Barrier

Floor Construction

R-Factor: R-25

- 1. Powder Coated 8" C Channel or 10" I-beam Frame
- 2. Lamplast enclosed underbelly with waterproof insulation
- 3. 3/4" Sturdi-wood Flooring (1 Piece)
- 4. Radiant Barrier
- 5. 8 lb. Density, 7/16" Carpet Pad
- 6. Color Coordinated Designer Carpet

Ceiling Construction

R-Factor: R-14

- 1. 5/32" Decorative Ceiling Panel
- 2. Light and Strong Truss Rafters
- 3. 4 1/2" Fiberglass Insulation Between Rafters
- 4. 5/16" Structure Wood Fastened to Rafters
- 5. Rubber Roof Laminated to Roof Deck

Panel-Core Super Structure Sidewall

R-Factor: R-9

Layer 1: Hi-Gloss Automotive Fiberglass with 1/4" Luan Backer. All butt seams in Luan are fiberglass which make a superior sidewall.

Layer 2: Hi Density Blue Polystyrene Foam by Dow® Chemical, Bonded Between Welded Aluminum Sidewall Substructure (25% high R-Value than White Bead Foam, 40% greater resistance to moisture and the only insulation material that has a 15 year guarantee.)



Standard Glide Ride bump absorbing hitch pin box.



The baggage areas offer spacious pass through storage to meet full-timer needs.



Standard 50 amp service with detachable cord.



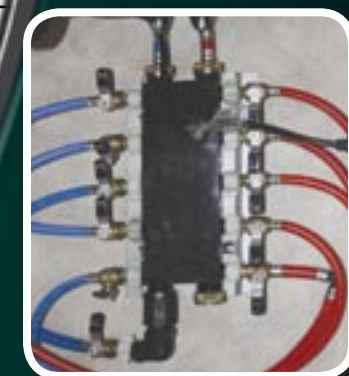
New style "scare" lights for safety and convenience.



Brighter, longer lasting and safer LED tail lights are standard.



Sidemarker/Turn Signal lights are also LED, adding to the safety factor.



Water Manifold System improves flow and provides individual shut off for easy service or maintenance.

STANDARD FEATURES

GLIDE ROOM FEATURES

Hydraulic Rack and Pinion glides w/ manual override
Bed and closet glides are electric motor design
Glides have insulated floors, and laminated walls & ceilings
Individual control switch for each glide
Overhead cabinets above sofa or chairs
Two Halogen lights with dimmer switch

BEDROOM FEATURES

Soft top 60" x 80" queen bed with storage underneath
Shelves and overhead cabinets near bed
Two large drawers built into storage area under bed
Residential style dresser w/ full extension drawer glides
Wired for second A/C in bedroom
"Blackout" day/night shades

BATHROOM FEATURES

Spacious fiberglass seamless shower with glass door
Power Vent/Dome with wall switch
Thetford Porcelain Toilet with water spray attachment
Solid surface countertop with integrated vanity sink
High intensity lights over vanity
Towel bar(s) and hand towel ring
Adjustable heat and AC ducts in bath area
Designer linoleum in toilet and lavatory area
TV lead in bedroom

KITCHEN & APPLIANCES

15,000 BTU Ducted Air Conditioner with
Digital Thermostat and Adjustable Registers
10 Gal. DSI/LP/110v Rapid Recovery Water Heater
Water Heater bypass system
Dometic OTR Microwave with built in vent
8 Cu. Ft. Norcold refrigerator w/raised panel doors
Three burner stove with stove cover and oven (recessed)
Two stage whisper quiet furnace
60 amp converter/battery charger
50 amp service w/ detachable power cord
Fire extinguisher, LP, smoke, and CO detectors
Most models wired for washer/dryer
Square Raised Panel Doors with New Double Radius Profile
Residential solid surface countertop with backsplash
Large, deep, integrated sinks
Single lever faucet with pull out spray
Multiple drawers including pot & pan drawer
Silverware tray
Full extension ball bearing drawer glides

Pantry with shelves and/or drawers
Coat closet at most entrance doors
Designer linoleum in kitchen and entry
Fluorescent lighting over kitchen counter
Rope lighting above cabinets (some models)
Residential concealed cabinet door hinges
Space for large wastebasket in most models
Toe Kick on Kitchen cabinets with accent lighting

LIVING ROOM, ENTERTAINMENT & DESK AREA

Single disc DVD/CD player w/surround sound
DVD/CD storage and space for Satellite receiver
Winegard TV antenna with signal amplifier
Wired and prepped for satellite dish (Tripod)
32" LCD HD capable flat screen TV
TV/VCR distribution for multi-program viewing
Hide-a-bed sofa with innerspring mattress
60", 66"(double bed) or 74"(Queen) HAB (see brochure)
Two comfy glider rocker recliners
Day/night shades
Residential carpet and pad
Hidden leaf dining table with four chairs
Fantastic Vent with wall mounted control
Ceiling fan with light in living or kitchen area
Exceptional lighting for reading
Dimmer switch to the new halogen lights
Cable, internet and phone connections at desk

FRAME & SUSPENSION FEATURES

10" I-beam frame for lighter weight models (329, 333, 339)
8" "C" channel frame (327, 348, 349, 355, 360, 363)
Frames are powder coat painted ("E" Coat on 333 RL)
Steel braces support water tank
Heavy duty outriggers to which floors are bolted
7000 lb axles with Nev-R-Lube bearings
Heavy duty greasable spring shackles
Heavy duty shock absorbers
Trail Air Equa Flex rubber suspension
Demco Glide Ride hitch pin box (regular or extended)
"E" or "G" range tire with 8 hole wheel (see specs)
Rear Stabilizer Jacks
Dual motor front jacks with snap locks
Wider and deeper entrance step lower to ground

EXTERIOR FEATURES

30 lb. LP bottles with auto changeover regulator
Slide out tray for two optional batteries
Battery cutoff switch for storage protection
Folding Entry assist handle
Deluxe 8500 Series A&E Awning
1" insulated baggage doors with motorhome type handles
Pneumatic hinges hold baggage doors in up position
Pre-wired for solar panel battery maintenance
HiGloss automotive fiberglass laminated sidewalls
Heated subfloor and holding tanks
Black holding tank flush kit
Hitch and baggage area lights
High intensity scare light on each side
Super Insulated Vacu-Bonded walls (see video on website)
Welded aluminum substructure for ends, sidewalls, glides
5" wood truss rafters to maximize insulation and strength
Wood decked "walk anywhere" rubber roof w/ vented attic
Black Frame Tinted safety glass windows
No window in entrance door reduces heat & maintenance
Water manifold system for individual control of fixtures
Large capacity pass through storage with lockable doors
Separate storage area for two folding lawn chairs
Separate vented storage tray for sewer hoses with door
"Flip up" extender for extra storage in basement
Radiant Barrier Insulation
Aluminum Wheels
Utility Center with winterization kit
Ladder for access to roof
TV lead in basement with 110v outlet

363 Sofa & Entertainment Area



OPTIONAL FEATURES

BEDROOM & BATHROOM OPTIONS

72" x 80" King bed soft top mattress (some models)
Delete bedspread and pillows on ordered unit
19" LCD TV with storage behind
Install combo washer/dryer
Install two piece stackable washer dryer (some models)
15,000 BTU A/C in bedroom (not ducted)
includes wall thermostat
Fantastic Fan in Bedroom or Bath
Chest of drawers for RSB slide out closet models
Bunks in place of closet in 339RSB
Steel safe installed
Pleated Privacy door for Hall (329/339/331/363)
Select Comfort Adjustable Bed (Queen)
Select Comfort Adjustable Bed (King)

KITCHEN & APPLIANCE OPTIONS

Cherry finish cabinets with hardwood doors
(Add extra for Cherry in 360SB)
Glazed finish on Cherry cabinet doors
10 cu. ft. refrigerator (exchange)
12 cu. ft. 4 door refrigerator (333, 348, 355, 360, 363)
Stainless Steel Package (refrig. front, microwave
& stove front)
Sealed burner stove
Heat pump for A/C with digital thermostat
Convection microwave
Ice maker in refrigerator (n/a when refreg in glide)
Flooring, wood grain laminate in kitchen (exchange)

LIVING ROOM, ENTERTAINMENT & DESK AREA

Extra Dining Chair for use at desk
Two Folding Dining Chairs (exchange)
Booth dinette to replace dining table and chairs
Leather Recliners (exchange)
Lightweight Euro Chairs with footstools (exchange)
Delete Recliners so customer can purchase their own
Delete Sofa on ordered coach so customer can
purchase their own
Flexsteel Theatre seating (exch. for recliners)
End table/mini coffee table
Fabric ceiling exchanged for vinyl panel ceiling
Fireplace/heater under TV
Vacuum sweeper built in with "vac pan" feature
Manual Roof mount Satellite dish (no receiver)
Auto Seek roof mount Satellite dish (no rec.)
Dual Pane slider windows (exchange)

FRAME & SUSPENSION OPTIONS

Electric Stabilizer Jacks (exchange for manual)
Big Foot Hydraulic Auto level system
(exchange for stabilizers & front jacks)
Big Foot EZE Manual Control Leveling System
(exchange for stabilizers & front jacks)
3 3/8" x 12 1/4" heavy duty brakes (exchange)
8K Disc brakes with hydraulic actuator (exchange)
Trail Air "Center Point" air ride suspension
16,000 lb. or 20,000 lb. Reese Hitch
Spare Tire with crank up hoist carrier ("E" range) (Steel Wheel)
Spare Tire with crank up hoist carrier ("G" range) (Steel Wheel)
"G" Range Goodyear Tires (exchange for "E" range)
Aluminum wheel for spare
"H" Range Tires, 9/16" lug Aluminum Wheels, includes spare
tire (exchange for "G") (355, 360, 363)
"H" Range Tires, 9/16" lug Aluminum Wheels, includes spare
tire (exch for "E") (339, 348, 349)
"H" Range Tires, 5/8" lug Aluminum Wheels, includes spare tire
with 8K Axles & Disc Brakes and TrailAir Suspension
(355, 360, 363)
"H" Range Tires, 5/8" lug Aluminum Wheels includes spare tire
with 8K Axles & Disc Brakes and TrailAir Suspension
(339, 348, 349)
Mud Flaps

Receiver Hitch for use with bike rack or ball mount
Heavy Duty Quad Entry Step

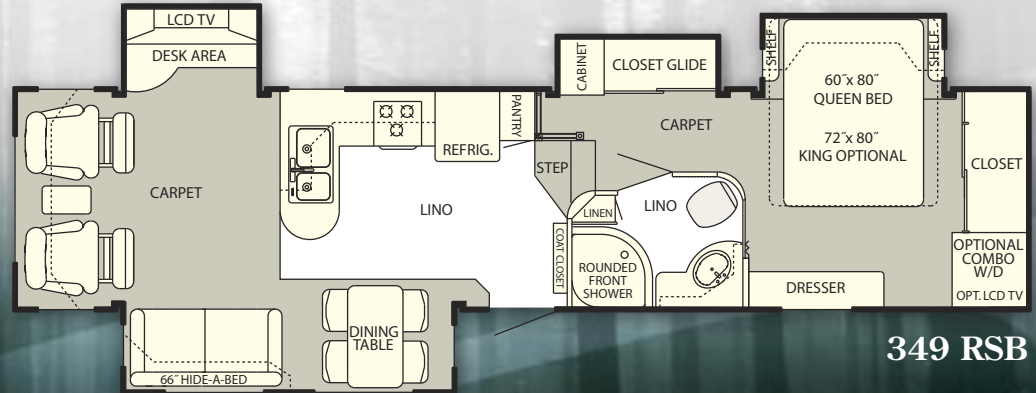
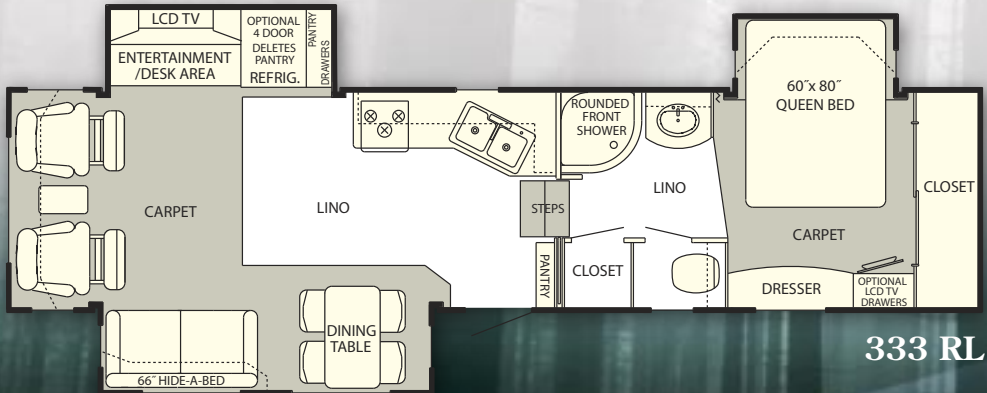
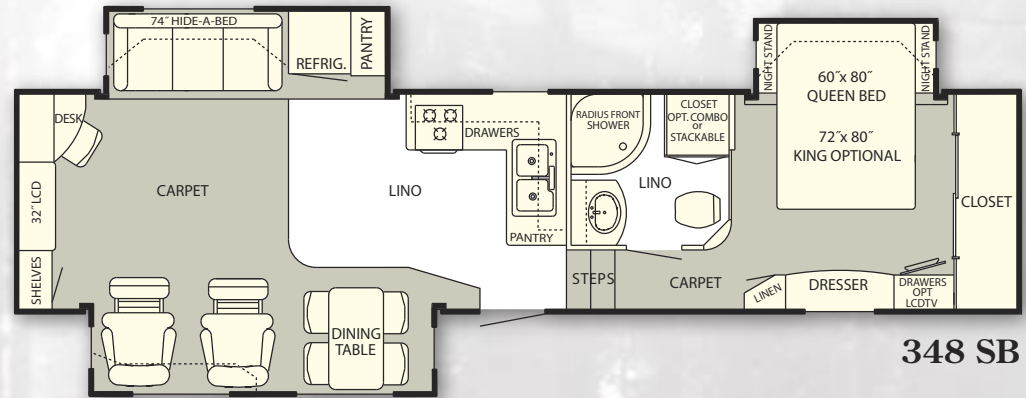
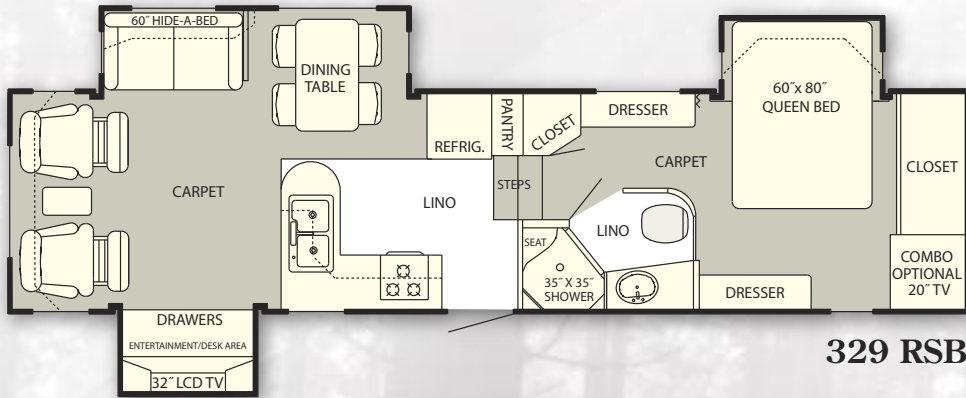
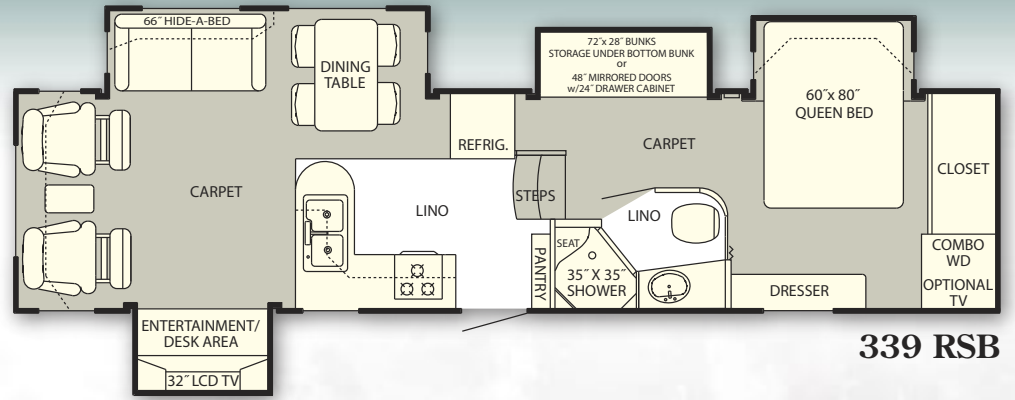
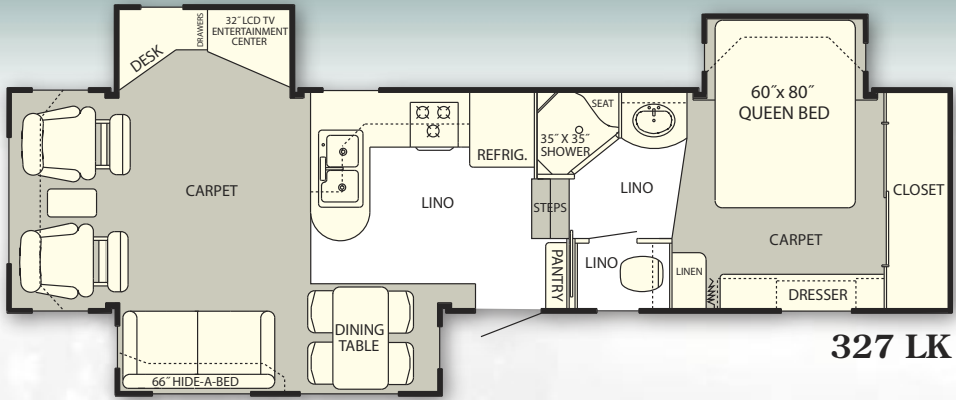
EXTERIOR & MISCELLANEOUS OPTIONS

Awning 9000 acrylic w/metal cover (exchange 8500)
Awning 9100 Electric with vinyl fabric (exch for 8500)
Awning Electric Weather Pro with Remote, acrylic fabric
(exchange 8500)
A&E sunscreen for rear window
Awnings for Windows (call for price)
Solar panel battery maintenance installed
Two 12v batteries installed
Four 12v batteries installed with extra tray
Four 6v batteries installed with extra tray
2000 Watt Pure Sine Wave Inverter/Charger
55 Watt Solar Panel(s) w/charge controller
Generator Prep with compartment installed
3.6K or 5.5K LP Onan generator (requires prep option)
Electric termination valves
Storage Slide out tray for baggage area
Surge protector Electrical Management System
with remote readout
Upgrade Platinum Graphics w/ABS Skirts & Bumper
See Level Monitor System (Probes installed outside of tanks)
Solar Safety Glass windows (exchange for tinted)

363 Kitchen shown with
Stainless Steel Package



DISCOVER AMERICA FLOOR PLANS



SPECIFICATIONS

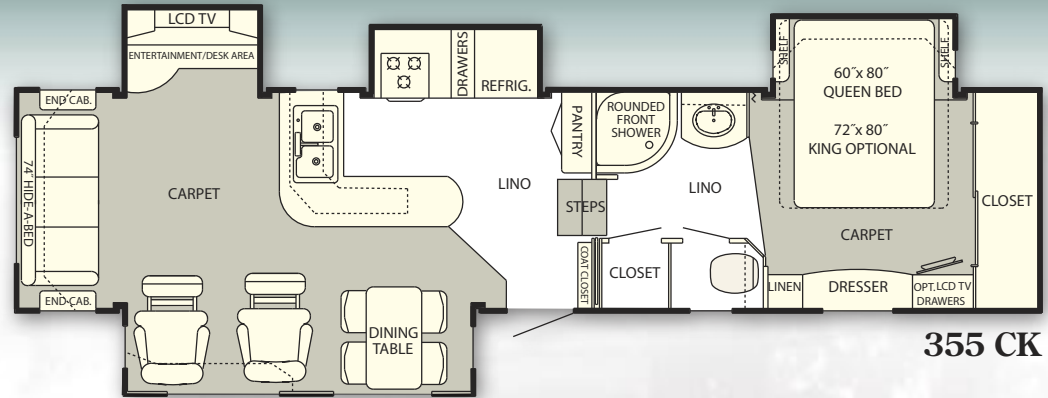
MODEL	Hitch Wt.	UVW	GVWR	NCC	Gross Axle Weight Rating	Ext. Height	Ext. Length
327 LK	2,220	11,520	14,300	2,780	6,084	12' 3"	33' 9"
329 RSB	2,200	11,540	14,200	2,660	6,084	12' 8"	34' 5"
333 RL	2,200	11,600	14,400	2,800	6,084	12' 5"	34' 11"
339 RSB	2,400	12,180	15,600	3,420	7,000	12' 8"	35' 5"
348 SB	2,180	12,180	15,600	3,420	7,000	12' 2"	36' 5"
349 RSB	2,360	12,640	16,200	3,560	7,000	12'	36' 5"
355 CK	2,720	12,880	16,400	3,520	7,000	12' 7"	36' 8"
360 SB	2,600	12,920	16,500	3,580	7,000	12' 5"	36' 10"
363 RSB	2,780	13,100	16,300	3,200	7,000	12' 8"	37'

MODEL	Fresh Water	Tanks Blk/Gry/Galley	Width	Square Footage	Tire Size
327 LK	70	NA/50/70	96"	344	LT235/85R16E
329 RSB	70	32/50/50	96"	348	LT235/85R16E
333 RL	70	NA/50/70	96"	360	LT235/85R16E
339 RSB	70	32/50/50	96"	371	ST235/80R16E
348 SB	70	NA/50/70	96"	381	ST235/80R16E
349 RSB	70	32/50/50	96"	368	ST235/80R16E
355 CK	70	32/50/50	96"	382	LT235/85R16G
360 SB	70	32/50/50	96"	382	LT235/85R16G
363 RSB	70	32/50/50	96"	393	LT235/85R16G

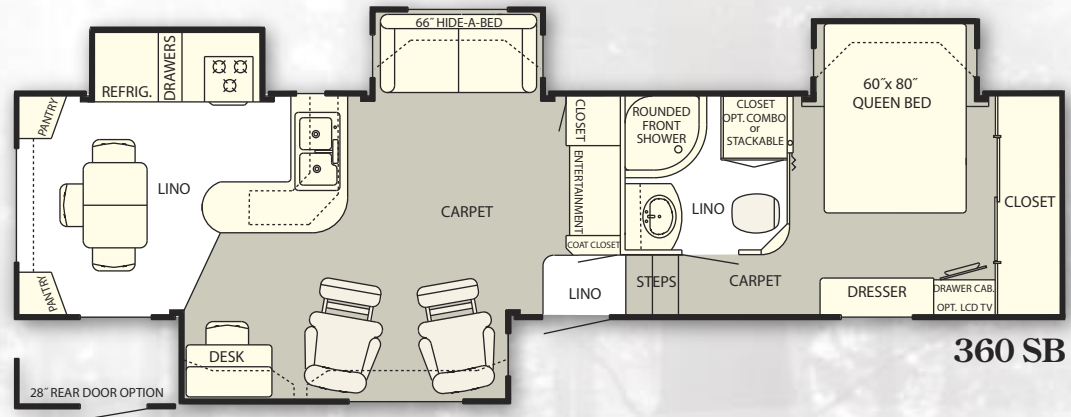


The optional slide-out baggage tray is easy to pack and organize for quick access.

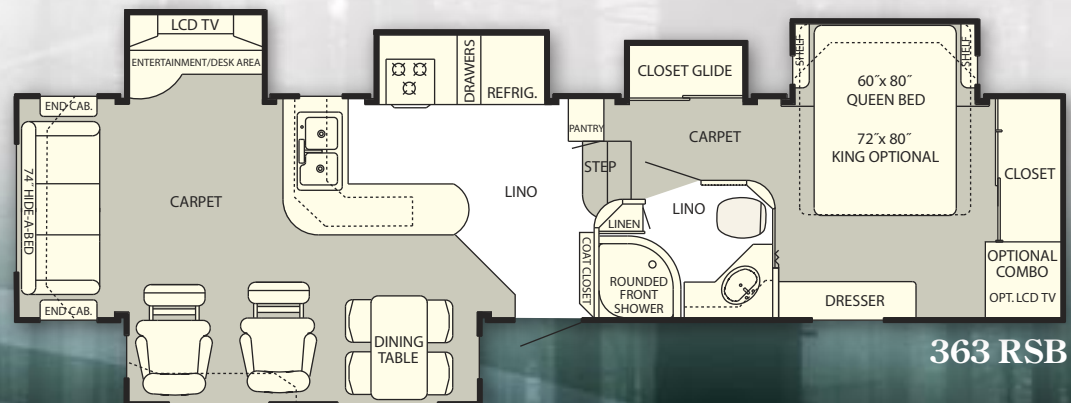
Four compartment battery storage.



355 CK



360 SB



363 RSB

348 SB



348 SB



The livability features of the 348 floorplan, which make it so popular are the “L” shaped kitchen with vast storage and counter space and the spaciousness of the living area created by the kitchen design and rear entertainment area. Customers say they are pleasantly surprised at how much storage exists they didn’t see during purchase. You won’t see all of the value of a HitchHiker at first; it takes time to “Discover the Difference”. Just ask a Hitchhiker owner, if he would make the same investment again.

363 RSB



Ten large drawers make for great storage and there are 4 more in the bathroom! No other manufacturer understands the importance of great design and livability. NuWa does and it is obvious to the experienced user!

Plenty of linen and overhead cabinet storage, superior counter space for the lady of the house to set her things, and an integrated solid surface sink for ease of cleaning. A curved shower design for more elbow room, a spacious toilet and dressing space for your "big guy", and a closet for him right outside the bath door, so he can let you sleep in the morning. These are the kinds of livability features that add some cost, but owners pleasantly appreciate more after their purchase.

DÉCOR

Beautiful Oak cabinetry is standard and Cherry finish cabinets are a popular option.

FABRIC ACCENTS

1. Sofa 2. Recliner 3. Dinette Chairs 4. Bedsread

OAK



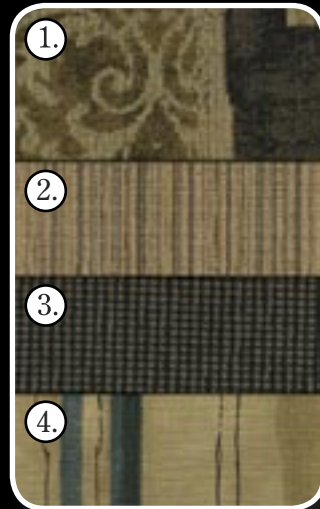
CHERRY STAINED



CHERRY GLAZED



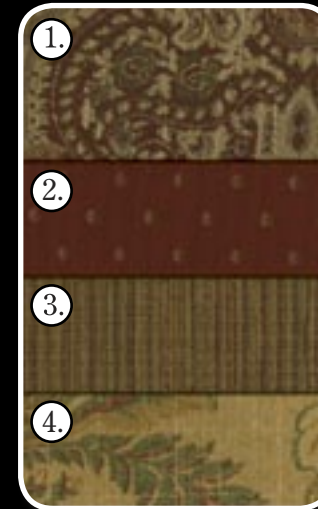
MINERAL



REGAL



SPA



CINNABAR



HONEY

12 MONTH LIMITED WARRANTY

NuWa Industries, Inc. and/or its component suppliers warrant this recreational vehicle for 12 months from the date of purchase. This warranty is transferable to a second owner. If any part of the vehicle fails to perform properly within this time period because of defective materials or faulty workmanship supplied by NuWa Industries, Inc., repairs will be made without charge (or according to limited warranty allowance of a specific component manufacturer) for materials or labor. NuWa will not, however, replace or repurchase the trailer from you. This warranty is limited by certain "exclusions" and "exceptions" listed in the complete warranty document which is available from your dealer or the NuWa website.

TWO YEAR STRUCTURAL WARRANTY

NuWa Industries, Inc. further warrants the structural portion of this recreation vehicle for two years (24 months) from the date of purchase. Structure consists of material and performance integrity of the sidewall, roof, and floor framing and the vacuum bond laminated process. Manufacturers of the frame and glide room systems, suspension components, rubber roof and fiberglass materials provide separate warranties, which may be fewer than or more than 24 months. NuWa typically administers these warranties, but does not assume actual responsibility for the warranty of any component supplier. This warranty is limited by certain exclusions, time limits, and exceptions listed in the complete warranty document.

©2009 NuWa Industries, Inc., reserves the right to make changes in colors, materials, components and specifications and to discontinue models at any time without notice or obligation. NuWa Industries, Inc., assumes no responsibility for any error in type or print reproduction of specifications in this brochure. Photographs may show equipment or items that are not in the base purchase price of the coach. Review a current model at your nearest dealer.

DISCOVER AMERICA DEALER

3701 Johnson Rd. • Chanute, KS 66720
800.835.0676 • www.nuwa.com