

HITCHHIKER



Shown With Deluxe Graphics Upgrade



Welcome to NuWa Industries, Inc. and the remarkable HitchHiker LS family. As you continue your quest to purchase a premium quality Fifth Wheel, there are some incredible differences that define our product as superior. The more you know about Nu Wa the better we look!

We only build fifth wheel trailers, our focus and tremendous resource of experience creates an exceptional product designed especially for the extended user and full-timer! Our culture at NuWa is one of "performance" and "substance versus superficial". Our commitment is to be the best built most livable and technologically superior fifth wheel in the industry. Innovative designs, superior construction techniques, and quality craftsmanship have been the cornerstone of the Nu Wa Tradition. Our unique Vacubonded Panel-Core Super Structure, using Nu Wa's famous "Blue Dow" foam for unsurpassed strength, is the only wall system with a 15 year guaranteed R-Factor. Our positive vent system in the attic and the addition of radiant barrier technology throughout, create a "true" Four Season capability in every coach. Oh and did we mention that through all of this, the HH LS represents tremendous value! You can pay more and you certainly can pay less but you simply can't buy "BETTER"! Be cautious of the "superficial" manufacturer and the culture of "what you don't see doesn't matter"! It makes sense to entrust your investment to a company whose reputation is unsurpassed and second to none in the camp ground and has no equal when it comes to quality, reliability and customer satisfaction.



Welcome Home to NuWa!



The 34.5 UK SBG LS, shown with standard Oak cabinetry and Mineral Décor, is just one of our many outstanding floorplans with the time proven "design by detail" philosophy that has been a trademark of Nu Wa quality for over 40 years. The rear sofa allows for optional recliners to be located directly in front of the HD LCD TV & Home Theater Sound System. The angled entertainment center/desk with file size drawers is loaded with storage and provides a great work space. The swivel extending arm for the HD LCD TV allows for optimum viewing from any seat in the room. Spacious solid surface countertop includes a breakfast bar, sink covers and pull out faucet. Full length pantry, storage above the refrigerator and large drawer below the stove, make this a uniquely designed dream kitchen.



Shown without standard countertop extension flip up.



Kitchen Featuring Pantry Glide Drawers



The 34.5 UK SBG LS

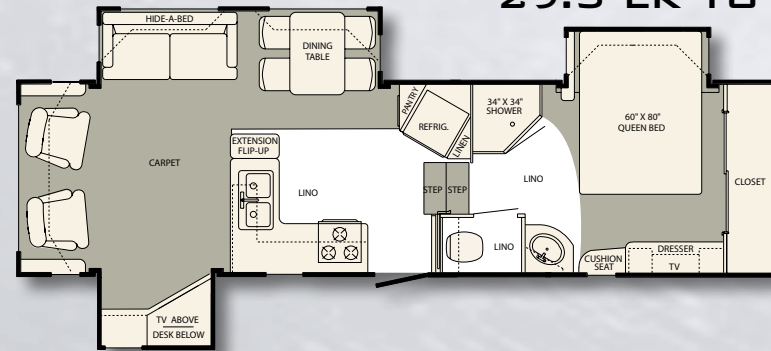
Queen bed with nightstands, provides additional storage above, below, and on each side of the bed. Optional King Bed (on SBG Models only) is available by deleting the nightstands. Popular side bath offers stylish vanity, with integrated sink, clothes hamper, linen closet, or Washer/Dryer cabinet. Shown with Polystone fiberglass vanity and shower (Deluxe Package item).

HITCHHIKER LS

FLOOR PLANS

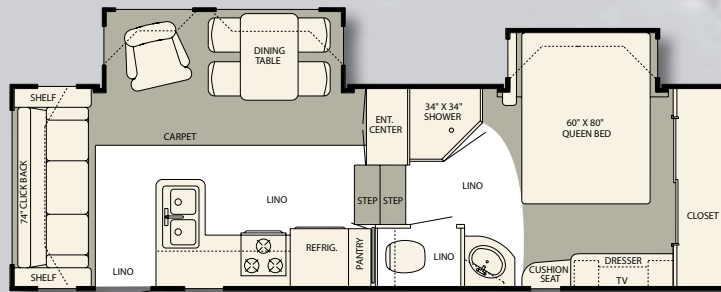


29.5 LK TG (312 Sq. Ft.)



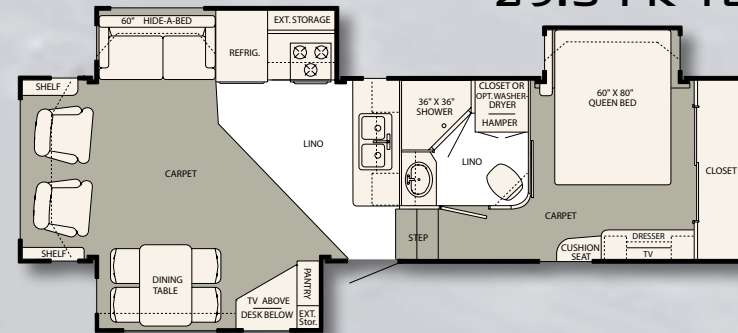
Hitch Wt. - 2,000	NCC - 4,052	Ext. Length - 31' 5"	Width - 96"
UVW - 9,943	GAWR - 6,000	Fresh Water - 70	Furnace - 35,000
GVWR - 13,995	Ext. Height - 12' 7"	Tanks (Blk/Gry/Galley) - 38/38/28	Tire Size - LT235/85R16E

26.5 RL BG (266 Sq. Ft.)



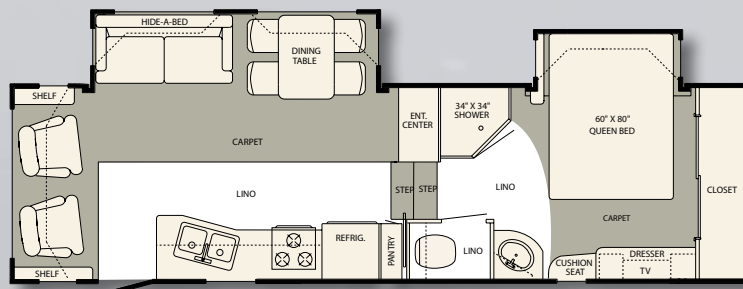
Hitch Wt. - 1,940	NCC - 3,784	Ext. Length - 28' 5"	Width - 96"
UVW - 8,716	GAWR - 6,000	Fresh Water - 70	Furnace - 35,000
GVWR - 12,500	Ext. Height - 12' 7"	Tanks (Blk/Gry/Galley) - 38/38/28	Tire Size - LT235/85R16E

29.5 FK TG (325 Sq. Ft.)



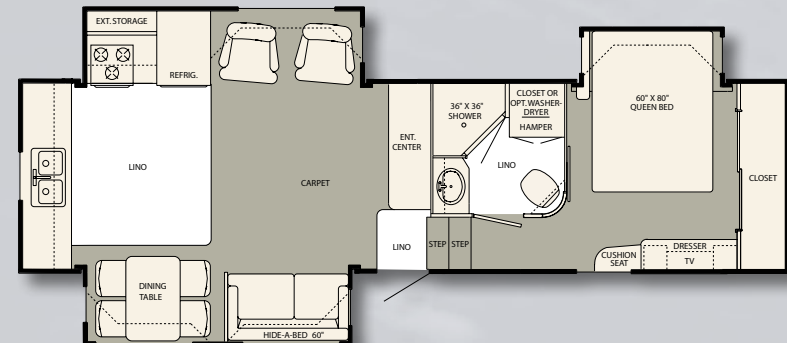
Hitch Wt. - 2,140	NCC - 3,795	Ext. Length - 31' 8"	Width - 96"
UVW - 10,200	GAWR - 6,000	Fresh Water - 70	Furnace - 35,000
GVWR - 13,995	Ext. Height - 12' 7"	Tanks (Blk/Gry/Galley) - 38/38/28	Tire Size - LT235/85R16E

28.5 RL BG (287 Sq. Ft.)



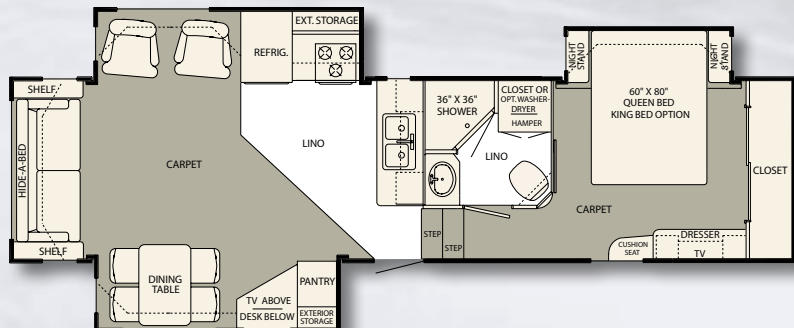
Hitch Wt. - 2,060	NCC - 3,952	Ext. Length - 30' 1"	Width - 96"
UVW - 9,148	GAWR - 6,000	Fresh Water - 70	Furnace - 35,000
GVWR - 13,100	Ext. Height - 12' 7"	Tanks (Blk/Gry/Galley) - 38/38/28	Tire Size - LT235/85R16E

30.5 RK TG (338 Sq. Ft.)



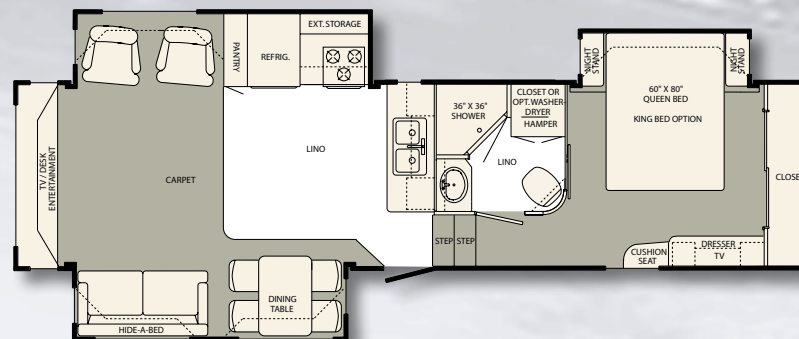
Hitch Wt. - 2,160	NCC - 3,702	Ext. Length - 32' 1"	Width - 96"
UVW - 10,598	GAWR - 6,084	Fresh Water - 70	Furnace - 40,000
GVWR - 14,300	Ext. Height - 12' 7"	Tanks (Blk/Gry/Galley) - 50/50/28	Tire Size - LT235/85R16E

32.5 FK SBG (356 Sq. Ft.)



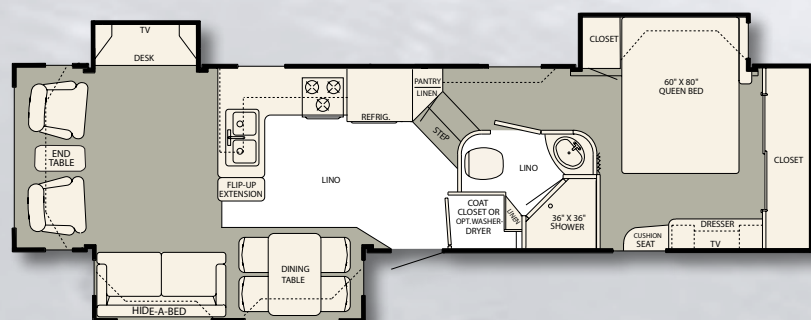
Hitch Wt. - 2,220	NCC - 3,575	Ext. Length - 34' 4"	Width - 96"
UVW - 10,810	GAWR - 6,084	Fresh Water - 70	Furnace - 40,000
GVWR - 14,385	Ext. Height - 12' 8"	Tanks (Blk/Gry/Galley) - 50/50/28	Tire Size - LT235/85R16E

32.5 RE SBG (361 Sq. Ft.)



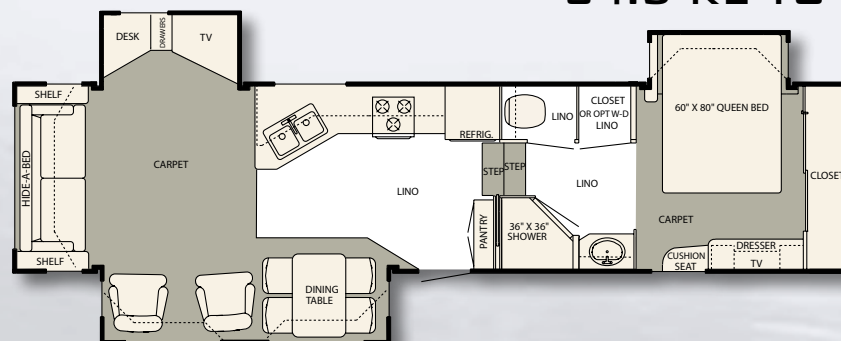
Hitch Wt. - 2,220	NCC - 3,575	Ext. Length - 34' 4"	Width - 96"
UVW - 10,810	GAWR - 6,084	Fresh Water - 70	Furnace - 40,000
GVWR - 14,385	Ext. Height - 12' 8"	Tanks (Blk/Gry/Galley) - 50/50/28	Tire Size - LT235/85R16E

32.5 LK RSB (338 Sq. Ft.)



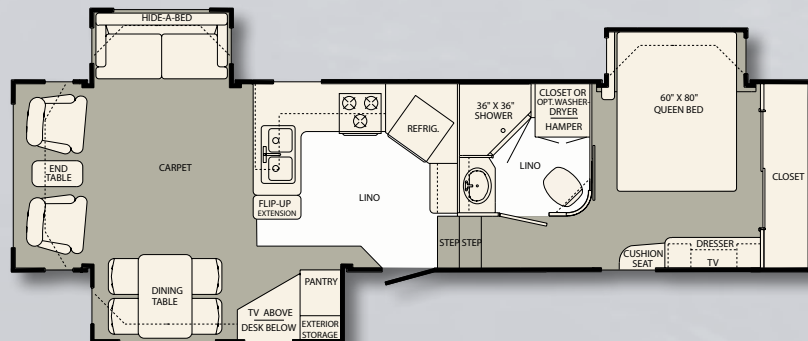
Hitch Wt. - 2,280	NCC - 3,551	Ext. Length - 34' 6"	Width - 96"
UVW - 10,849	GAWR - 6,084	Fresh Water - 70	Furnace - 40,000
GVWR - 14,400	Ext. Height - 12' 8"	Tanks (Blk/Gry/Galley) - 50/50/28	Tire Size - LT235/85R16E

34.5 RL TG (352 Sq. Ft.)



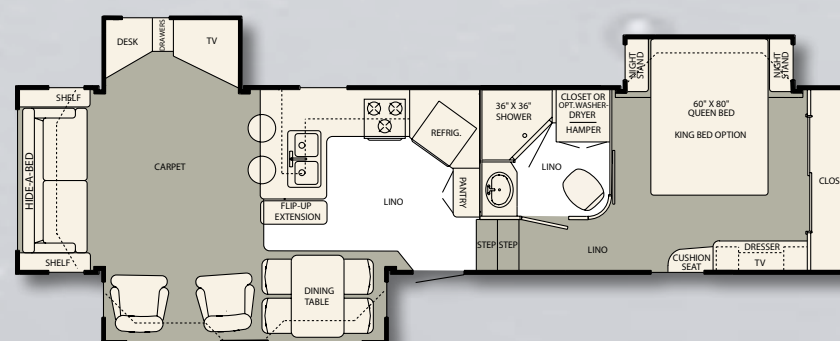
Hitch Wt. - 2,140	NCC - 3,733	Ext. Length - 35' 9"	Width - 96"
UVW - 10,867	GAWR - 7,000	Fresh Water - 70	Furnace - 40,000
GVWR - 14,600	Ext. Height - 12' 9"	Tanks (Blk/Gry/Galley) - 50/50/28	Tire Size - ST235/80R16E

32.5 UK TG (334 Sq. Ft.)



Hitch Wt. - 2,160	NCC - 3,702	Ext. Length - 33' 10"	Width - 96"
UVW - 10,598	GAWR - 6,084	Fresh Water - 70	Furnace - 40,000
GVWR - 14,300	Ext. Height - 12' 8"	Tanks (Blk/Gry/Galley) - 50/50/28	Tire Size - LT235/85R16E

34.5 UK SBG (359 Sq. Ft.)



Hitch Wt. - 2,020	NCC - 3,723	Ext. Length - 36' 3"	Width - 96"
UVW - 10,877	GAWR - 7,000	Fresh Water - 70	Furnace - 40,000
GVWR - 14,600	Ext. Height - 12' 9"	Tanks (Blk/Gry/Galley) - 50/50/28	Tire Size - ST235/80R16E



The 32.5 FK SBG LS, offers a wide open spacious design in a mid size length, shown here with the Cherry stained cabinetry and Cinnabar Décor. Hidden leaf dinette table, comfortable fabric back dinette chairs, designer style window treatment are just a few of the optional Deluxe Package items shown. The angled HD LCD TV, desk with keyboard tray, space for an optional fireplace, and an extra wide pantry with pull out drawers, creates great storage and a total user friendly design.

The 29.5 FK TG LS, is the smaller and yet very popular version of the 32.5 FK SBG. This design features a full size kitchen with more drawers than most residential homes. The optional swivel glider recliners shown in the Spa Décor, maximize the large rear window for spectacular views of the great outdoors. The beautiful dresser with six drawers has plenty of storage behind and on each side of the optional LCD TV. The cushioned window seat is a great addition to this bedroom suite shown here in the Cinnabar Decor. For the weight and length conscious buyer this floorplan offers the ultimate in livability and towability.



Queen soft top mattress with optional LCD TV



Living Room, Entertainment & Desk Area

32" HD LCD TV (VP), Single disc DVD/CD Player w/surround sound (VP), Winegard TV antenna with signal amplifier, Wired and prepped for satellite dish (Tri pod), TV, Cable, internet, and phone connections, Venetian Blinds, Hide-A-Bed Sofa w/innerspring mattress, Swivel Rocker(s), Free standing Dinette table with four high back Chairs. **Optional Features:** Swivel/Glider Recliners, Leather Recliners, Lightweight Euro Chairs with footstools, Two Folding Dinette Chairs, Day/night Fabric Shades (part of Deluxe Pkg), Booth Dinette to replace dinette table, Hidden Leaf Dinette Table (part of Deluxe Pkg), TV/VCR distribution, Fabric Ceiling, Fireplace (req. 50 amp), Vacuum Sweeper built in with "vac pan" feature, Fantastic Fan in Living Room, Manual roof mount Satellite dish (no receiver), Auto Seek roof mount Satellite dish (no receiver), Solar Safety Glass Windows, Dual Pane slider Windows

Kitchen & Appliances

8 Cu. Ft. Norcold Refrigerator w/raised panel doors (VP), SpaceSaver Microwave with built in vent (VP), Three burner Stove and Oven, 13,500 BTU Ducted A/C, 35,000 or 40,000 BTU forced air Furnace, 6 Gal. DSI/LP Rapid Recovery Water Heater, Water Heater bypass system, 55 amp Converter/battery Charger, Fire Extinguisher, LP, Smoke, and CO Detectors, Designer Linoleum in kitchen and entry, Corian® Solid Surface Kitchen Countertop with backsplash, Corian® Solid Surface Sink Covers, Single Lever Faucet with pull out spray, Silverware Tray, Full Extension ball bearing Drawer Glides, Pantry with shelves and/or drawers, Square Raised Panel Cabinet Doors, Space for wastebasket, Toe Kick under kitchen cabinets. **Optional Features:** Cherry Stained Square Raised Panel Hardwood Cabinet Doors, 10 cu. ft. Refrigerator, Sealed Burner Stove, Stove Top cover, 15,000 BTU Ducted A/C, Heat Pump for 15,000 BTU Ducted A/C with digital thermostat, Two stage whisper quiet Furnace, Ceiling Fan with light, Wood Grain Laminate Flooring in kitchen, 10 Gal. DSI/ LP/110v Rapid Recovery Water Heater

Bedroom & Bathroom

Soft Top 60" x 80" Queen Mattress (VP), Wood Headboard, Overhead Cabinets above bed, Residential Dresser with drawers on full extension glides, Power Vent over shower, Polystone Surface Countertop with Integrated Vanity Sink, Towel Bar and Hand Towel Ring, Heat & A/C Ducts in bath area. **Optional Features:** King Bed (SBG models only - deletes Nightstands), LCD TV, Combo Washer/Dryer (some models), Two Piece Stackable Washer/Dryer (some models), Washer/Dryer Prep, Porcelain Toilet with Spray attachment, Polystone Fiberglass Seamless Shower with seat (part of Deluxe Package), 13,500 BTU A/C in Bedroom includes wall thermostat (req.50 amp), Fantastic Fan in Bedroom or Bath, Steel Safe, Pleated Privacy Door for Bedroom (some models).

Frame & Suspension

8" I-Beam Frames (26.5, 28.5, 29.5 models) or 10" I-Beam Frames are powder coat painted, Heavy duty outriggers to which floors are bolted, Hydraulic Rack and Pinion Glides with manual override, 6,000 or 7,000 lb Axles, Adjustable Height Package (VP), Super Lube Bearings (VP), Heavy Duty Greasable Spring Shackles (VP), Heavy Duty Shock Absorbers, "E" Range Tires, Electric Front Jacks, Rear Stabilizer Jacks (VP), Wider and deeper entrance step lower to ground, **Optional Features:** Big Foot Hydraulic Auto Level system (10" frame models only), Big Foot EZE Manual Control Leveling system (10" frame models only), Dual Motor Front Jacks, Electric Stabilizer Jacks, 7000 lb Axles upgrade (standard on 30.5 RK TG & up), Nev-R-Lube Axles, 3 3/8" x 12 " Heavy Duty Brakes (req. 7,000 lb Nev-R-Lube axles), 8K Disc Brakes with hydraulic actuator (req. 7,000 lb axles), G Range Goodyear Tires (req. 7,000 lb axles), Aluminum Wheels (part of Deluxe Pkg), Aluminum Wheel for spare, Spare Tire with crank up hoist carrier, Trail Air Equa Flex rubber suspension, Trail Air "Center Point" air ride suspension, 16,000 or 20,000 lb. Reese Hitch, Heavy Duty Extended Hitch Pin Box, Demco Glide Ride Hitch pin box (regular or extended), Receiver Hitch

Exterior, Structural, & Miscellaneous

Filon® Fiberglass Laminated Sidewalls, Super Insulated Vacu-Bonded Walls (see video on website), Welded Aluminum Substructure for ends, sidewalls & glides, Wood decked "walk anywhere" rubber roof w/vented attic, Fiberglass Front Cap, Fiberglass Rear Cap (VP), 30# LP Bottles w/auto changeover regulator, Battery Cutoff Switch (VP), Folding Entry Assist Handle (VP), SunChaser Series A&E Patio Awning (VP), Heated subfloor and holding tanks, Black Holding Tank Flush Kit (VP), Tinted Safety Glass Windows (VP), Large capacity pass through storage, Separate storage area for two folding lawn chairs, Separate vented storage tray for sewer hoses with door, Radiant Barrier Insulation, Hitch and Baggage area Lights, Utility Center & winterization kit, 12 Month/Two Year Limited Warranty, **Optional Features:** Hi Gloss Automotive Fiberglass laminated sidewalls (part of Deluxe Pkg), 9000 series acrylic Awning w/metal wrap, 9100 series Electric Awning w/vinyl, Weather Pro Elect. Awning, w/ acrylic fabric & Remote, A&E Sunscreen for rear window, Window Awnings, Exterior Ladder, Solar Panel battery maintenance installed, Two 12 Volt Batteries installed, Four 12 or 6 volt Batteries installed w/extra box, 2000 Watt Pure Sine Wave Inverter/Charger w/battery condition readout (req. 50 amp), 55 Watt Solar Panel(s) w/charge controller, 3.6K LP Onan Generator (requires prep option), 5.5K LP Onan Generator (10" frame & prep option required), Generator Prep with compartment installed (30 amp), Generator Prep with compartment installed (50 amp), 50 amp Electric Service with detachable power cord, Storage Slide Out Tray for baggage area, Surge Protector Electrical Management System w/remote readout, See Level Monitor System (Probes outside tanks), High Intensity Scare Light on each side

Optional Value Package (VP) Items:

Patio Awning, Tinted Safety Glass Windows, 8 Cu. Ft. Refrigerator with raised panel doors, SpaceSaver Microwave, 32" HD LCD TV (VP), Single Disc DVD/CD Player w/Surround Sound, Soft Top 60" x 80" Queen Mattress, Adjustable Height Package, Super Lube Bearings, Heavy Duty Greaseable Spring Shackles, Battery Cutoff Switch, Folding Entry Assist Handle, Black Holding Tank Flush Kit, Rear Stabilizer Jacks, Fiberglass Rear Cap

Optional Deluxe Package (DP) Items:

Hi Gloss Automotive Fiberglass, Deluxe Exterior Graphics with colored radius, Aluminum Wheels, Upgraded Window Treatment, Hidden Leaf Dinette Table, Deluxe Dinette Chair upgrade, Day/Night Fabric Shades, Deluxe Style Carpet upgrade, Halogen/Florescent Ceiling Lights, Lead Glass Doors in rear overhead cabinets, Polystone Fiberglass Seamless Shower with seat, Additional Bed Glide Shelf

©2008 NuWa Industries, Inc., reserves the right to make changes in colors, materials, components and specifications and to discontinue models at any time without notice or obligation. NuWa Industries, Inc., assumes no responsibility for any error in type or print reproduction of specifications in this brochure. Photographs may show equipment or items that are not in the base purchase price of the coach. Review a current model at your nearest dealer.

YOUR HITCHHIKER LS DEALER:



3701 JOHNSON RD. CHANUTE, KS 66720
800.835.0676 · WWW.NUWA.COM