

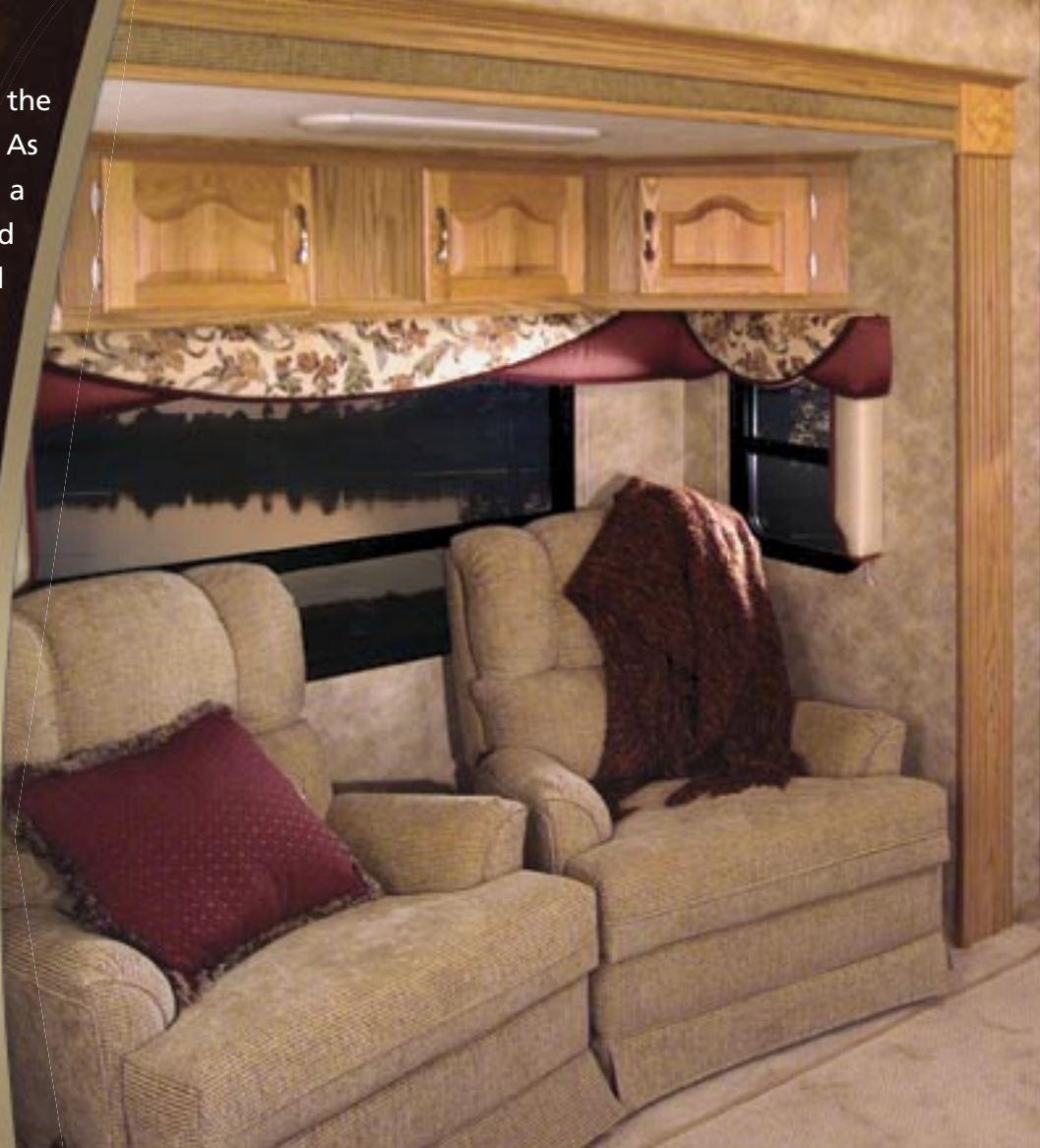
HITCHHIKER II LS



Shown with Deluxe graphics upgrade.



Welcome to NuWa Industries, Inc. and the remarkable HitchHiker II L/S family. As you continue your quest to purchase a premium quality Fifth Wheel, we would like you to know just who we are and what we are about! We are the oldest manufacturer of fifth wheel trailers in the country! In that we only build fifth wheel trailers, our focus and tremendous resource of experience creates an exceptional product designed especially for the extended user and full-timer! Our culture at NuWa is one of "performance" and "substance versus superficial". Our commitment is to be the best built most livable and technologically superior fifth wheel in the industry. Oh and did we mention that through all of this, the HH II L/S represents tremendous value! You can pay more and you certainly can pay less but you simply can't buy "BETTER"! Be cautious of the "superficial" manufacturer and the culture of "what you don't see doesn't matter"! It makes sense to entrust your investment to a company whose reputation is unsurpassed and second to none in the camp ground and has no equal when it comes to quality, reliability and customer satisfaction.



30.5 RK TG Living & Entertainment Center (Cabernet)

2008 brings continued innovation and excitement. New floor plans with King Bed capability, well designed computer work station/desk areas and a great home theater/Surround Sound system are just some of the standard amenities. Add the optional fireplace and/or a super flat screen LCD TV featuring a swivel extending arm for viewing from any angle and you are on your way to an incredible experience enjoying the RV life style!



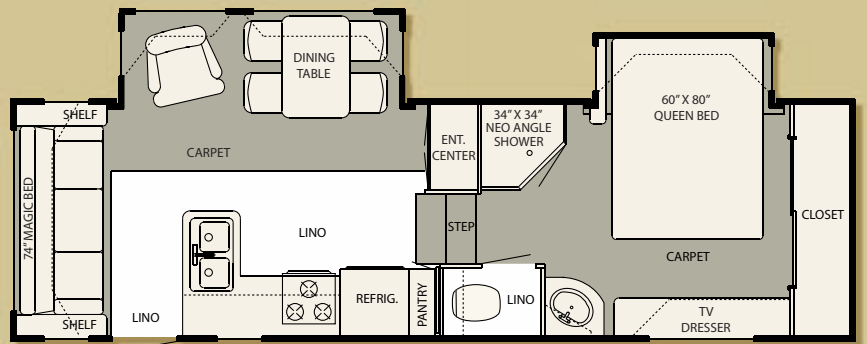
The New 30.5 RK TG provides spacious countertops, abundant storage, lower overhead cabinets, and individual slide out Pantries. The optional SpaceSaver Microwave, upgraded Window Treatments, Hidden Leaf Dinette Table and fabric back Chairs, are just some of the Deluxe Package items that are shown above.



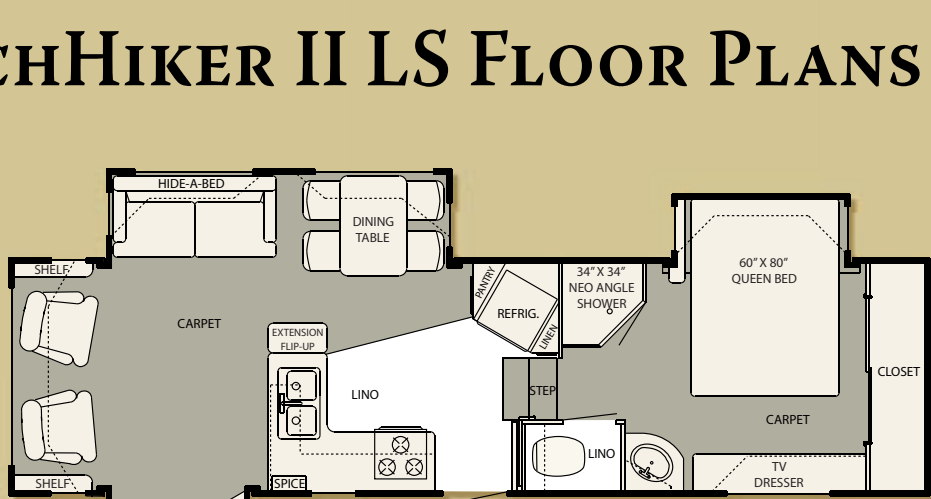
30.5 RK TG Kitchen & Dining Area (Cabernet)



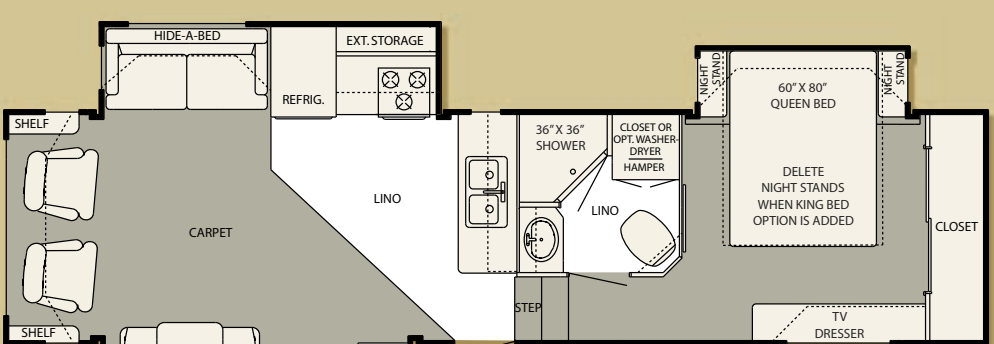
HITCHHIKER II LS FLOOR PLANS



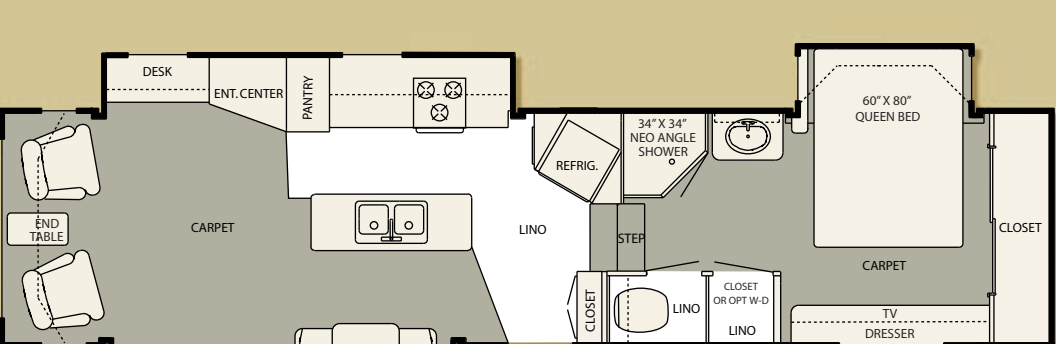
26.5 RLBG LS



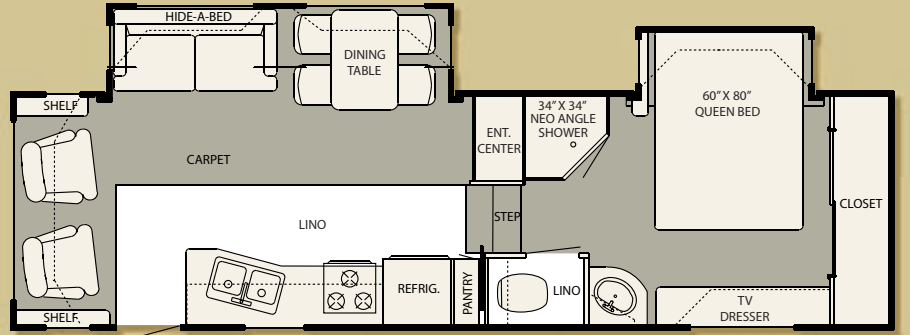
29.5 LKTG LS



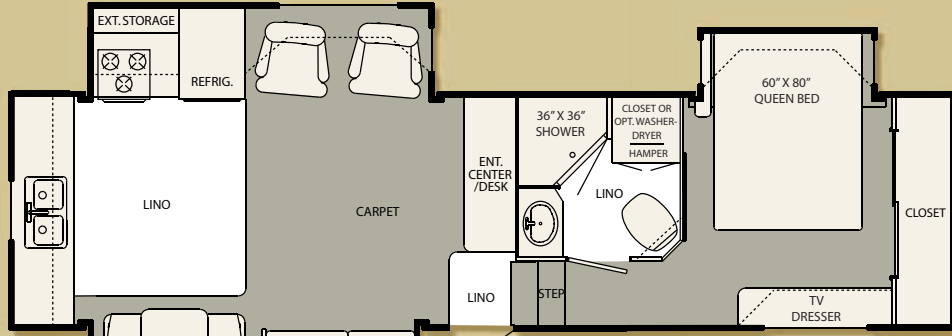
32.5 FKSBG LS



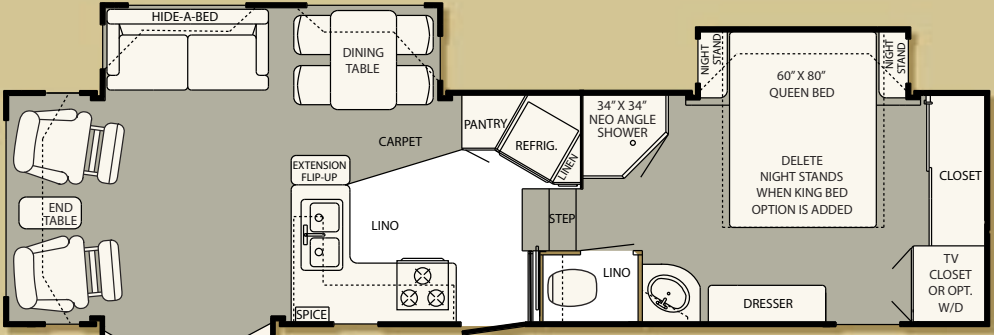
34.5 IKTG LS



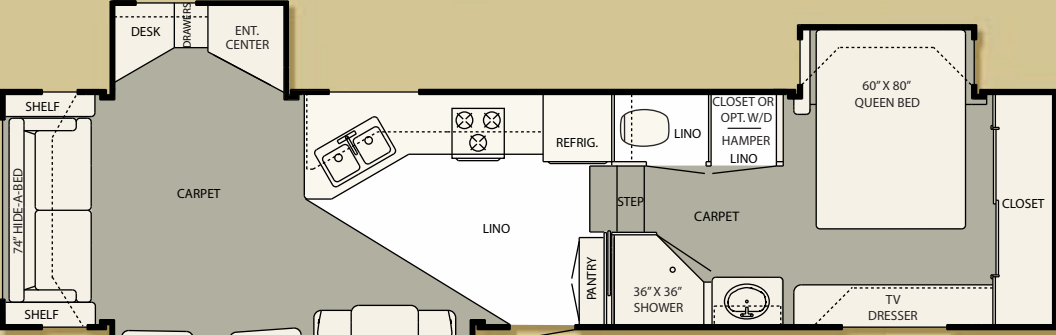
28.5 RLBG LS



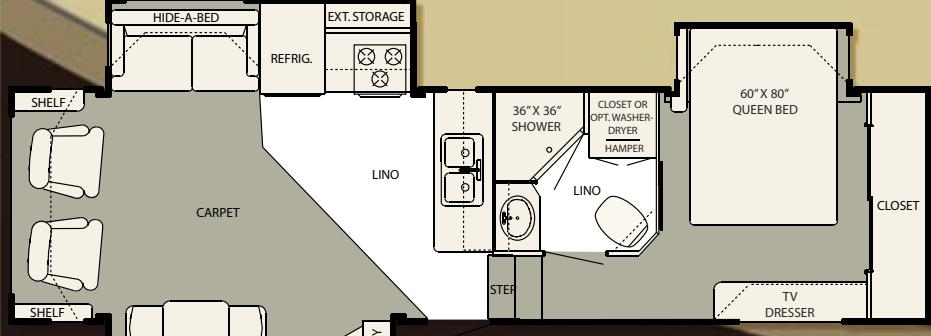
30.5 RKTG LS



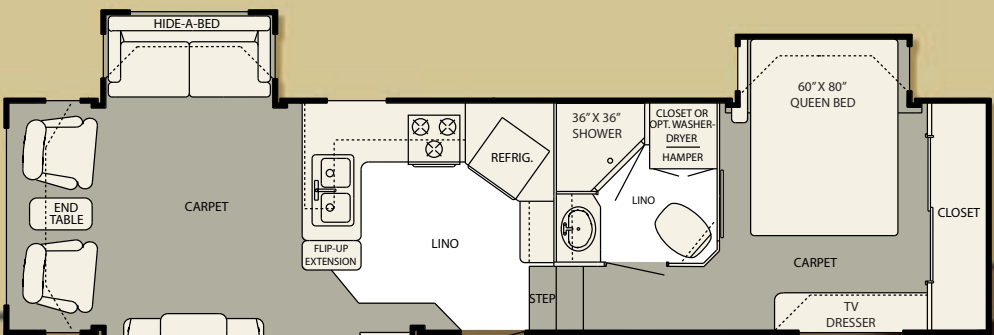
32.5 LKSBG LS



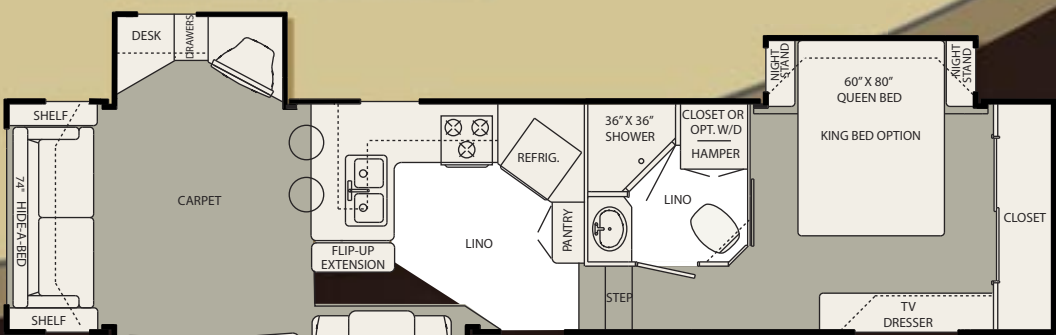
34.5 RLTG LS



29.5 FKTG LS



32.5 UKTG LS



34.5 UKSBG LS

SPECIFICATIONS

Value Package adds 454 lbs.

| Model | Hitch Wt. | UWV | GVWR | NCC | Gross Axle Weight Rating | Ext. Height | Ext. Length | Fresh Water | Tanks Blk/Gry/Galley | Width | Square Footage | Tire Size |
|------------|-----------|--------|--------|-------|--------------------------|-------------|-------------|-------------|----------------------|-------|----------------|--------------|
| 26.5 RLBG | 1,900 | 8,600 | 12,500 | 3,900 | 6,000 | 12' 7" | 28' 5" | 70 | 38/38/28 | 96" | 266 | LT235/85R16E |
| 28.5 RLBG | 2,060 | 9,028 | 12,800 | 3,772 | 6,000 | 12' 7" | 30' 1" | 70 | 38/38/28 | 96" | 287 | LT235/85R16E |
| 29.5 FKTG | 2,120 | 10,083 | 13,500 | 3,417 | 6,000 | 12' 7" | 31' 8" | 70 | 38/38/28 | 96" | 325 | LT235/85R16E |
| 29.5 LKTG | 1,740 | 9,609 | 13,500 | 3,891 | 6,000 | 12' 7" | 31' 5" | 70 | 38/38/28 | 96" | 312 | LT235/85R16E |
| 30.5 RKTG | 2,080 | 10,521 | 13,675 | 3,154 | 6,000 | 12' 8" | 32' 1" | 70 | 50/50/28 | 96" | 338 | LT235/85R16E |
| 32.5 FKSBG | 2,220 | 10,655 | 13,850 | 3,195 | 6,000 | 12' 8" | 33' 11" | 70 | 50/50/28 | 96" | 350 | LT235/85R16E |
| 32.5 LKSBG | 2,240 | 10,210 | 13,850 | 3,640 | 6,000 | 12' 8" | 33' 11" | 70 | 50/50/28 | 96" | 336 | LT235/85R16E |
| 32.5 UKTG | 2,160 | 10,478 | 13,675 | 3,197 | 6,000 | 12' 8" | 33' 10" | 70 | 50/50/28 | 96" | 334 | LT235/85R16E |
| 34.5 IKTG | 2,121 | 10,883 | 14,075 | 3,192 | 6,084 | 12' 9" | 35' 9" | 70 | 50/50/28 | 96" | 359 | LT235/85R16E |
| 34.5 RLTG | 2,140 | 10,747 | 13,995 | 3,248 | 6,084 | 12' 9" | 35' 9" | 70 | 50/50/28 | 96" | 352 | LT235/85R16E |
| 34.5 UKSBG | 2,160 | 10,800 | 14,075 | 3,275 | 6,084 | 12' 9" | 35' 11" | 70 | 50/50/28 | 96" | 359 | LT235/85R16E |





32.5 LK SBG
Queen Bed with Night Stands (Mineral)

Innovative designs, superior construction techniques, and quality craftsmanship have been the cornerstone of the Nu Wa Tradition. Our unique Vacubonded Panel-Core Super Structure, using Nu Wa's famous 'blue Dow' foam for unsurpassed strength, is the only wall system with a 15 year guaranteed R-Factor.



34.5 RL TG
Living Area (Mineral)



29.5 FK TG
Kitchen (Truffle)



29.5 FK TG
Living & Dining Area (Truffle)

NuWa also announces the addition of Radiant Technology "reflective" insulation in roofs, floors, and under end caps that reflects Summer heat away, and holds Winter heat in the trailer at a stated rate of 97% efficiency. This reflective insulation will noticeably increase your comfort level in any climate, and reduce the load off the air conditioner, as well as the furnace, to help reduce energy consumption. Add to this superior combination of insulation, a positive vented attic system, and a proven sub floor heating design and the HitchHiker II LS creates "true" Four Season capability in every unit.

STANDARD FEATURES

Exterior & Structure

Filon® Fiberglass Exterior, Flat Smooth Finish • Fiberglass Front Cap • Rubber Roof • Vented Attic • Vacubond Structural Blue Dow® Panel Wall Construction • Large Capacity Pass Through Storage • Enclosed and Insulated Underbelly • Heated Holding Tanks • Rack & Pinion Hydraulic/Electric Glide Systems with Manual Override • Bolt On, Removable Hitch Pin • Electric Front Jacks • Shock Absorbers • Electric Brakes (12") • Patio Lights • Entrance Steps • Level Bedroom/Bathroom Floor

Appliances & Equipment

35,000/40,000 BTU Forced Air Furnace • 13,500 BTU Roof Ducted A/C • Double Door Refrigerator • 6 Gallon Gas Water Heater with DSI • Water Heater Bypass Kit • Deluxe 3-Burner Range and Oven with Piezo Lighter • Range Hood with Power Vent and Light • TV Antenna with Amplifier • Cable TV, Satellite, and Phone Hookups • Power Vent in Bath and Private Toilet • Power Converter with Charger • (2) LP 30 lb. Bottles with Auto Regulator • LP Gas Detector • CO Detector

Furnishings

Residential Raised Panel Hardwood Cabinet Doors • Deluxe Hide-A-Bed Sofa with Innerspring Mattress • Swivel Rocker(s) • Overhead Cabinets in Living Room Glides • Overhead Cabinets in Bedroom Glides • Decorative Borders • Fluted Wood with Fabric Glide Faces • Free Standing Dinette Table and Four High-Back Chairs • Venetian Blinds • Designer Clock • Formica® Perma Edged Kitchen Countertops • Sink Covers /Cutting Boards • Full Extension Ball Bearing Drawer Glides • Linen Storage in Bath • Medicine Cabinet • Raised Panel Bathroom Doors • Toilet with Spray Attachment • Dresser with Oak Top and Large Drawers • Full Queen 60" x 80" Mattress • Quilted Bedspread with Pillows & Shams • Night stands with Drawers (SBG Models Only)

OPTIONAL FEATURES

Exterior & Structural

Fiberglass Exterior, Smooth High Gloss Finish (DP) • Fiberglass Rear Cap (VP) • Deluxe Style Exterior Graphics (DP) • Patio Awnings (VP) • 9000 Series Metal Wrap Awning • WeatherPro Awning • Dual Motor Front Jacks • Adjustable Height Package (VP) • Heavy Duty Brakes (Requires 7,000 lb. NEV-R-LUBE Axles) • Disc Brakes with Hydraulic Actuator (Requires 7,000 lb. NEV-R-LUBE Axles) • Receiver Style Boat Hitch • Reese 16,000 or 20,000 Hitch with Side Swivel • Heavy Duty Hitch Extension • Glide Ride® Hitch Pin • Upgrade to 7,000 lb. Axles • SUPER-LUBE Axles (VP) • Heavy Duty Greaseable Shackles (VP) • NEV-R-LUBE Axles • Upgrade to 16" G-Rated Tires • Rubber Equalizer Suspension • Centerpoint Air Ride Suspension • Under-Carriage Spare Tire with Hoist (VP) • Aluminum Wheels • Rear Stabilizer Jacks (VP) • Electric Rear Stabilizer Jacks • Exterior Shower • Holding Tank Flush Kit • Sunscreen for Picture Window • 12 Volt Interstate Battery • Battery On/Off Switch • 55 Watt Solar Panel(s) with charge controller • 2000 Watt Pure Sine Wave Inverter (Requires 50 Amp Electric Service) • Surge Protector Electrical Management System • Solar Safety Glass Windows • Dual Pane Windows • Storm Windows • Foldaway Handrail • Roof Access Ladder • Slide Out Storage Tray for Baggage Area

Appliances & Equipment

15,000 BTU Roof Ducted A/C • 15,000 BTU with Heat Pump A/C • 13,500 BTU Bedroom A/C (Requires 50 Amp Electric Service) • Dual Stage Whisper Quiet Furnace • Microwave Oven (VP) • SpaceSaver Microwave Oven (DP) • 10 Gallon Gas/Electric Water Heater with DSI • Water Filter for the Kitchen • Large Double Door Refrigerator with Wood Front (VP) • 10 cu. ft. Refrigerator with Oak Front • 50 Amp Electrical Service • Washer/Dryer Prep (Select Models) • Washer/Dryer (Installed) • Generator Prep (Box & Wiring) • (3.6) KW LP Onan Generator • Central Vacuum • Color TV with Remote Control (VP) • Color TV with Remote Control in Bedroom • Flat Panel LCD HD Ready TV on Swivel Arm • TV/Video Distribution Center • Satellite Dish (Manual with Digital Magic or Auto Seek) • Surround Sound Stereo with DVD (VP) • Folding Range Cover

Furnishings

Deluxe Style Carpet (DP) • Fireplace (Requires 50 Amp Electric Service) • King Bed Option (Super Bed Glide Models Deletes Night stands) • Deluxe Swivel/Glider Recliners • Leather Deluxe Swivel/Glider Recliners • Lightweight Euro Chairs with Footstools • Oak Hidden Leaf Table (DP) • Fabric Back Oak Dinette Chairs (DP) • Dinette Booth • Ceiling Paddle Fan • Fabric Ceiling • Ultra Firm Deluxe Mattress with Soft Top Padding • Day/Night Fabric Shades (DP) • Plank Floor in Kitchen and Entry • Fantastic Vent with Rain Sensor • Privacy Door for Bedroom • Molded Fiberglass Shower with Seat (DP) • Additional Florescent Ceiling Lights (DP) • Steel Safe • Porcelain Toilet with Sprayer

(VP) – Optional Value Package Items: Adjustable Height Package • Super Lube Axles • Heavy Duty Greaseable Shackles • Fiberglass Rear Cap • Dark Tinted Safety Windows • Patio Awning • Spare Tire & Hoist • Rear Stabilizer Jacks • Microwave • Large Double Door Refrigerator & Oak Panel Door • Color TV • Surround Sound Stereo System

(DP) – Optional Deluxe Package Items: Hi Gloss Exterior Fiberglass • Deluxe Exterior Graphics • Deluxe Carpet upgrade • Space-Saver Microwave • Hidden Leaf Table & Oak Chairs • Upgraded Window Treatment • Day Night Fabric Shades • Fiberglass Shower with Seat • Additional Florescent Lighting • Additional Bed Glide Shelf

18 Month Limited Warranty

NuWa Industries, Inc. warrants this recreational vehicle for 18 months from the date of purchase. This warranty is transferable to a second owner. If any part of the vehicle fails to perform properly within this time period because of defective materials or faulty workmanship supplied by NuWa Industries, Inc., repairs will be made without charge for materials or labor. NuWa Industries will not, however, replace or repurchase the trailer from you. This warranty is limited by certain "exclusions" and "exceptions" listed in the complete warranty document which is available from your dealer or the factory.

Two-Year Structural Warranty

NuWa Industries, Inc. further warrants the structural portion of this recreation vehicle for two years (24 months) from the date of purchase. This warranty provides a guarantee against defects of materials or faulty workmanship of the steel frame, wood or aluminum structure, vacuum-bond laminated sidewalls, and the glide room system, including pumps or motors. Structure consists of material and performance integrity of the sidewalls, roof, and floor framing. This warranty is limited by certain exclusions, time limits, and exceptions listed in the complete warranty document which is available from your dealer or the factory.

©2008 NuWa Industries, Inc., reserves the right to make changes in colors, materials, components and specifications and to discontinue models at any time without notice or obligation. NuWa Industries, Inc., assumes no responsibility for any error in type or print reproduction of specifications in this brochure. Photographs may show equipment or items that are not in the base purchase price of the coach. Review a current model at your nearest dealer.



You Won't Want To Miss This!
Go online and check out additional information on our new 2008 HitchHiker II.



www.nuwa.com

Custom Campers, Inc. Subsidiary of NuWa Industries, Inc.
PO Box 965 • Chanute, KS 66720 • 620-431-3990

HitchHiker II LS Dealer: